



EDGITE10

Services Portfolio 2026

USD

how we work?

Edgite is a real estate marketing production studio based in Budapest. We fuse GIS data, 3D modeling, and extensive asset libraries with graphic design and multimedia expertise to revolutionize property showcasing.

Our collaborative team creates informative maps, engaging graphics, and stunning visuals. We help you turn listings into memorable stories that captivate audiences.

Choose **Edgite** to transform your real estate presentations. Our creative methods ensure your offerings are unique and appealing to potential buyers and tenants.

services overview



3D Renderings

- Photorealistic Exteriors
- Photorealistic Interiors
- Repositioning Renderings



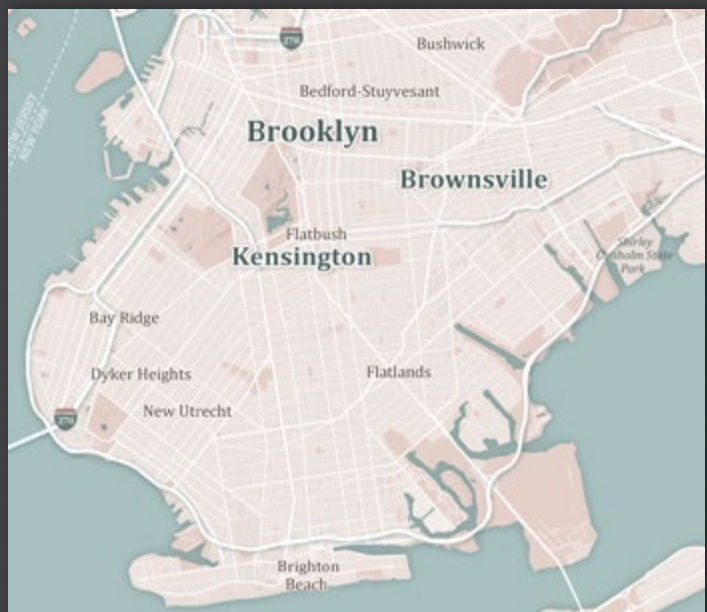
Functional 3D Graphics

- 3D Stacking Plans
- 3D Floor and Site Plans
- 3D Maps



Multimedia

- Virtual Tours
- Interactive Labeled Aerials
- Animation
- Video Editing



Vector Graphics

- Vector Maps
- Amenity / Comp Maps
- Logo Maps
- 2D Site and Floor Plans
- Line Drawings



Custom Graphics

- Infographics
- Booklet Design
- Custom Requests



Photorealistic Exteriors

Photorealistic Exterior Rendering USD 1 500

Photorealistic Aerial Composition USD 1 200

Exterior + Aerial Bundle USD 2 300

Timing 4 days

Price and timing can fluctuate depending on the complexity of the building and the level of detail required for the overall scope. Consult your Edgite representative for your project specifics, including multi-rendering discounts.

What to include in the brief?

- 3D source files and or any additional details/plans of the final building (PDF) to assist in the modeling process (façade plans, section plans, ceiling heights, finishes, etc.)
- any missing, incomplete or low-quality source files could increase costs
- Confirmation of the viewing angle
- Any references or style example images





Photorealistic Interiors

Photorealistic Interior Rendering
of a Typical Residential Unit

USD 800

Photorealistic Interior Rendering
of a Typical Amenity/Hospitality Space

USD 1 200

Photorealistic Interior Rendering
of a Typical Commercial Floor

USD 1 400

Timing

3 days

A discounted price may be applied for additional views of the same space. Consult your Edgite representative for further discount details and specifics.

What to include in the brief?

- Floor plans or photos of the space for structural modeling
- Style reference images or mood board(s)

Recommended use:

- To show design options for an unbuilt interior







AFTER

Repositioning Renderings

Completely 3D Rendered Interior
Repositioning Rendering **USD 1 000**

3D Rendered Exterior Repositioning
Overlay Combined with Photo Editing **USD 1 200**

Timing **3 days**

The price includes basic interior design preparation with mood suggestions. Consult your Edgite representative for specifics, including discounts for multiple renderings/styles.

What to include in the brief?

- A digital image of the premises that will be implemented as the base of the rendering/composition
- Reference images - for mood, style and function
- Sketches of any structural changes on the base photo
- Site/floor plans if available

Recommended use:

- To show the proposed renovation of existing building parts
- To show multiple options for the use of the same space





3D Stacking Plans

Tier 1 – Core Assets **USD 1 000**

Single-building stacking plans with limited context.

Tier 2 – Multi-Building Sites **USD 1 600**

Multiple structures with expanded site context and landscaping.

Tier 3 – Landmark & Masterplans **USD 2 500**

Large-scale sites, detailed landmarks, or complex surroundings.

Timing (Tier 1) **2 days**

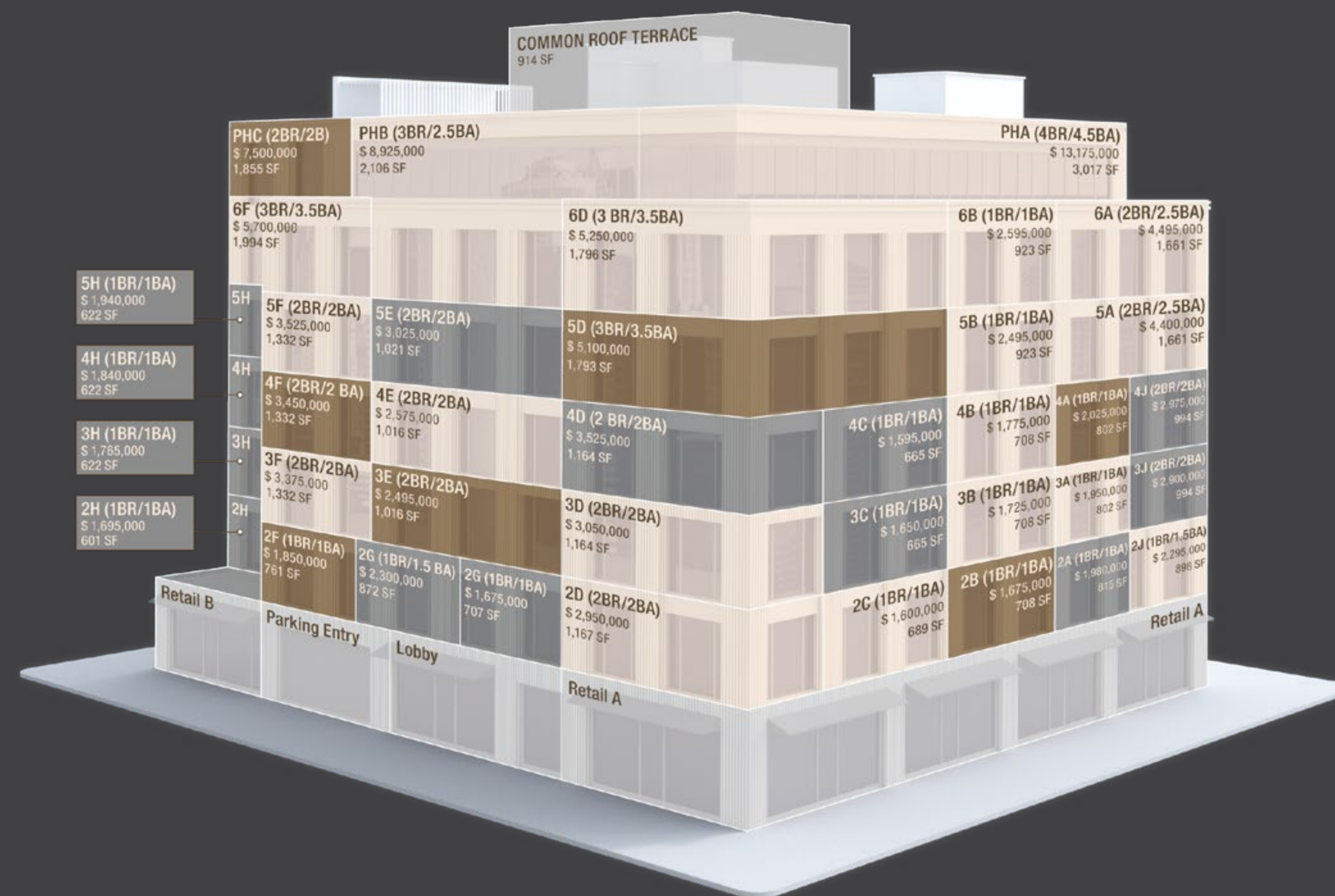
Timing (Tier 2) **3 days**

Timing (Tier 3) **4 days**

Price and timing can fluctuate depending on the complexity of the building and the level of detail required for the overall scope. Please consult your Edgite representative for project-specific pricing and timing.

What to include in the brief?

- Floor plans, façade plans, and other data to assist in the modeling process (ceiling heights, section plans, finishes, etc.) - any missing, incomplete or low-quality source files could increase costs
- Confirmation of the viewing angle
- Any references or style example images



3D Floor Plan - Residential Unit



3D Floor Plan - Commercial Floor



3D Floor Plans

3D Floor Plan - Residential Unit

USD 500

3D Floor Plan - Commercial Floor

USD 800

Timing

2 days

What to include in the brief?

- Precise source files
- Page size (or element size if not full page)
- Color scheme and fonts
- Any additional information to include (dimensions, North arrow, tenant summary/room details labels)

Recommended use:

- To illustrate different layout options for the same space
- Navigation overview for Rendered Interior Virtual Tours



Simple 3D Site Plan



Detailed 3D Site Plan

3D Site Plans

Simple Top-down 3D Site Plan **USD 500**

- Simplified building shapes

Detailed Top-down 3D Site Plan **USD 1 000**

- Detailed building shapes, finishes, trees

Timing (Simple) **2 days**
Timing (Detailed) **3 days**

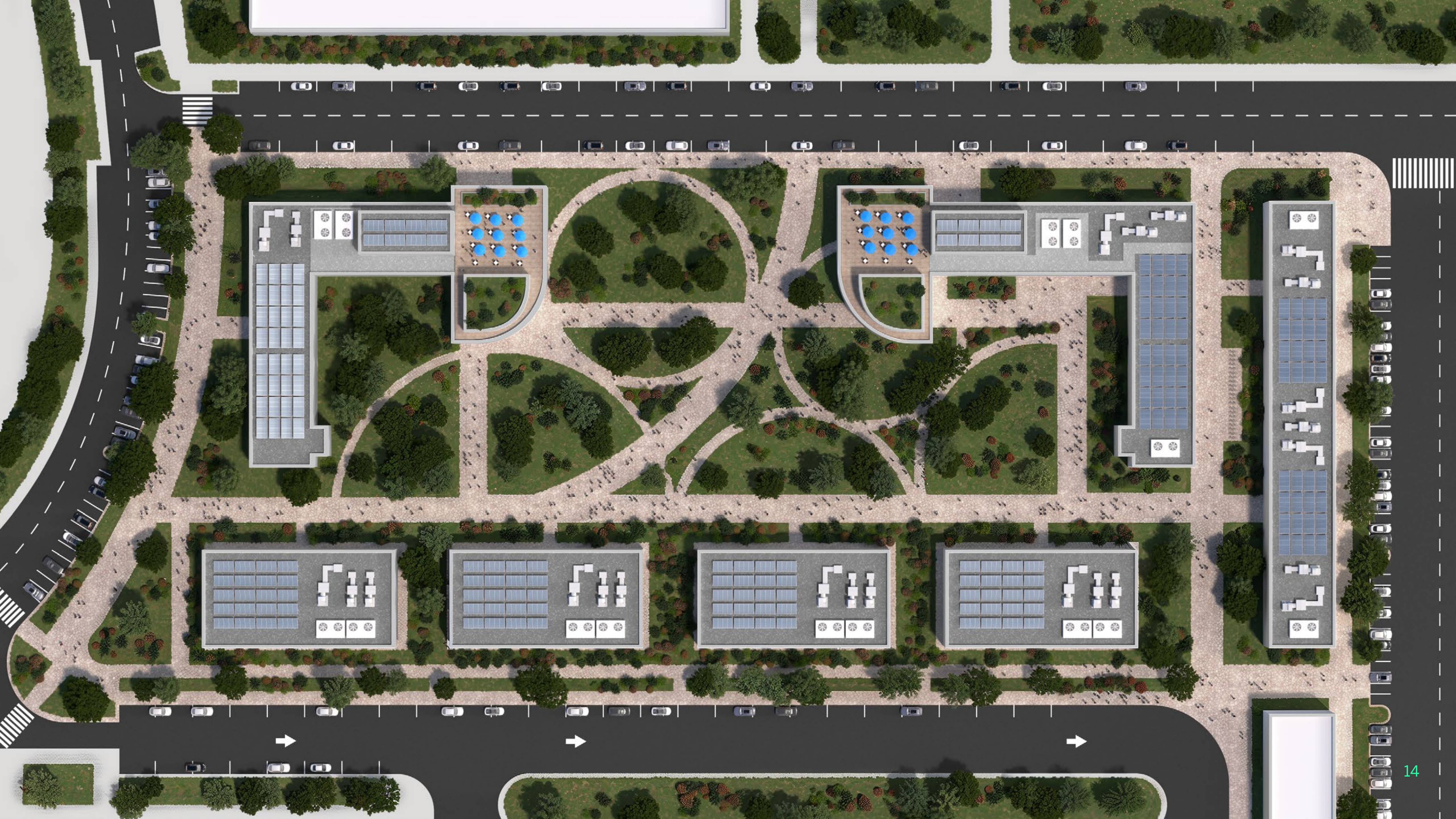
Discounts may apply if 2D and 3D Floor or Site Plans or 3D Stacking of the same property are ordered at the time of quote. Price and timing can fluctuate depending on the required level of detail - please consult your Edgite representative for a formal quote.

What to include in the brief?

- Precise source files
- Page size (or element size if not full page)
- Color scheme and fonts
- Any additional information to include (labels, dimensions, North arrow, tenant summary)

Recommended use:

- Enhance the understanding of complex commercial and multi-family properties by visualizing their layouts and direct surroundings.
- A primary overview base element for interactive tours.



3D Maps



Base 3D Map
from existing city models

USD 400

Timing

by the next day

Add-ons:

USD 100+

- Colored overlays for properties/areas
- Textured highlights for select properties
- Street names, Transportation overlays

What to include in the brief?

- Screenshot for viewing angle confirmation (preferably from Google Maps 3D/Satellite)
- Image size and orientation (default is 8.5x11"/A4 landscape)
- Please advise your Edgite representative if you require editable overlays (.AI file)
- Any details/source files for the highlights, especially if the specifics are still under development.

Cost breakdown

- Base 3D Map: USD 400
- Vector overlays, labels: USD 200

3D Maps



Custom 3D/Terrain Map via 2D/3D Data

from third-party data, for most locations

USD 1 000

Custom 3D/Terrain Map via Imagery

from satellite imagery for any location worldwide

USD 2 000

Timing

3 days

Add-ons:

USD 100+

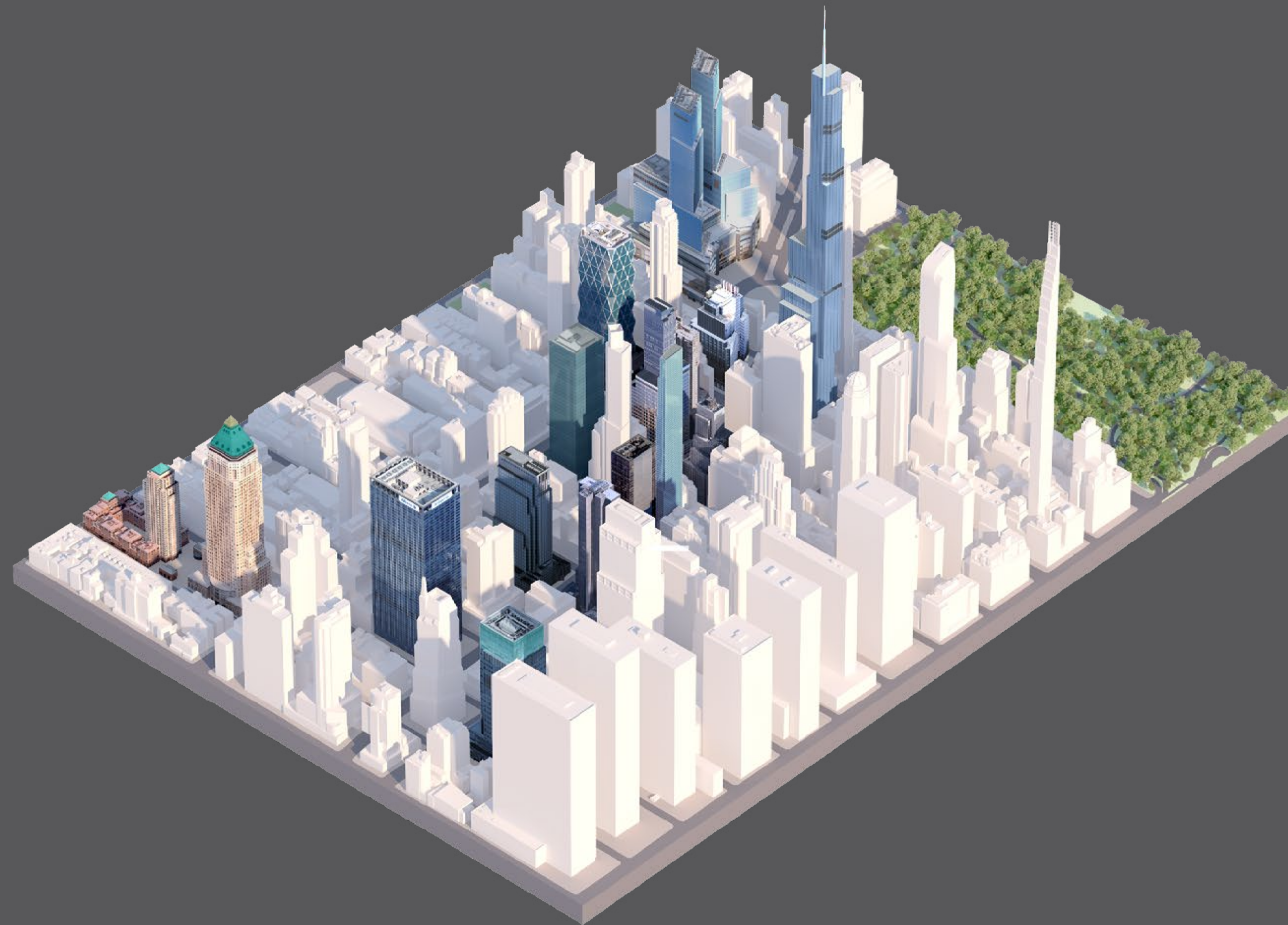
- Colored overlays for properties/areas
- Textured highlights for select properties
- Street names, Transportation overlays

What to include in the brief?

- Screenshot for viewing angle confirmation (preferably from Google Maps 3D/Satellite)
- Image size and orientation (default is 8.5x11"/A4 landscape)
- Please advise your Edgite representative if you require editable overlays (.AI file)
- Any details/source files for the highlights, especially if the specifics are still under development.

Detailed Highlights

Add-ons for 3D Maps



Basic Building Models

USD 50/ EACH

- with simplified features, limited textures/materials

Advanced Building Models

USD 250/ EACH

- with 3D modeled details/features

Price and timing can vary significantly based on building complexity. Level of detail specified for bird's-eye view only. We can add Detailed Building Models for free if an Exterior Rendering or 3D Stacking Plan is also requested. Please consult your Edgite representative for project-specific pricing and timing.

Timing

2 days

What to include in the brief?

- Any details/source files for the highlights, especially if the specifics are still under development.



Textured 3D Maps

Photogrammetry 3D Map

USD 400

from commercially released Photorealistic 3D Tiles
via Cesium - coverage is the same as Google Maps 3D

Timing

by the next day

Satellite Overlay 3D Map

USD 1 000

based on 3D city models and commercial satellite imagery -
coverage is limited, satellite sourcing cost varies

Timing

2 days

Add-ons:

USD 100+

- Colored overlays for properties/areas
- Street names, Transportation overlays
- Logos, Custom Labels

What to include in the brief?

- Screenshot for viewing angle confirmation (preferably from Google Maps 3D/Satellite)
- Image size and orientation (default is 8.5x11"/A4 landscape)
- Please advise your Edgite representative if you require editable overlays (.AI file)
- Any details/source files for the highlights, especially if the specifics are still under development.

Photogrammetry 3D Map



Satellite Overlay 3D Map



3D Cities

READILY AVAILABLE CITIES



USA, CANADA:

- Antioch (CA)
- Atlanta (GA)
- Austin (TX)
- Baltimore (MD)
- Boston (MA)
- Charlotte (NC)
- Chicago (IL)
- Concord (CA)
- Dallas (TX)
- Detroit (MI)
- Fremont (CA)
- Hayward (CA)
- Houston (TX)
- Jersey City (NJ)
- Kansas City (MO)
- Las Vegas (NV)
- Los Angeles (CA)
- Miami (FL)
- Minneapolis (MN)
- Nashville (TN)
- New Orleans (LA)
- New York (NY)
- Oakland (CA)
- Philadelphia (PA)
- Richmond (VA)
- San Antonio (TX)
- San Francisco (CA)
- San Jose (CA)
- Seattle (WA)
- St. Louis (MO)
- Toronto (CAN)
- Vancouver (BC) (CAN)
- Washington D.C.

EUROPE, ASIA

- Amsterdam (NL)
- Berlin (DE)
- Belgrade (RS)
- Bratislava (SK)
- Brussels (BE)
- Bucharest (RO)
- Budapest (HU)
- Cologne (DE)
- Copenhagen (DK)
- Dusseldorf (DE)
- Dortmund (DE)
- Dresden (DE)
- Florence (IT)
- Frankfurt (DE)
- Hamburg (DE)
- Hong Kong (HK)
- Leipzig (DE)
- London (UK)
- Madrid (ES)
- Kuala Lumpur (MY)
- Manchester (UK)
- Milan (IT)
- Monaco (MC)
- Munich (DE)
- Oslo (NO)
- Paris (FR)
- Prague (CZ)
- Rome (IT)
- Singapore (SG)
- Seoul (KR)
- Sofia (BG)
- Sydney (AU)
- Taipei (TW)
- Tokyo (JP)
- Utrecht (NL)
- Vienna (AT)
- Warsaw (PL)
- Zürich (CH)

Please request a quote and timing for any cities not on the list.



Extra Info/ 3D Maps

- We will confirm whether the 3D map you requested is available in our 3D data library, covered by third-party libraries, or requires manual modeling work.
- If additional content sourcing is necessary, changing the camera angle after the draft is delivered may result in an additional charge (due to applicable third-party extra charges).
- Although we strive to maintain up-to-date 3D city models, we may need your feedback on any active developments we should include. Our team will add these to the 3D map rendering at no additional cost.
- The default image size is 8.5x11" with 300 PPI; a higher resolution or larger size may incur extra charges.
- Please let us know if you need the overlays in editable format (.AI file) or baked into the 3D map (PNG/JPG).
- A 50% surcharge may apply for expedited orders.
- Request a quote for any other cities currently not on the [list](#)
- Pricing for unique style 3D maps (night mode, hand-painted, toy-like) may vary; please discuss details with your Edgite representative.



Rendered 360° Virtual Tours

Rendered 360° Virtual Tour

USD 3 000

- 3D modeling of a single commercial floor or residential unit
- Detailed furniture and finishes
- HTML5 Interactive System with Standard UI
- 6 images of rendered 360° panoramic views

Additional 360° Panoramic Views

USD 400

For before-and-after scenarios, the 360° panoramic photos are not included in the price and must be provided. The timing will be advised upon receiving all details. Please consult your Edgite representative for project-specific pricing and timing.

What to include in the brief?

- Floor plan for modeling - low-quality source files could increase the total costs
- Interior design plan or reference images for layout and style
- Panoramic photography for Before-After scenarios

Recommended use:

- Tour of interior spaces to show structure, style, and layout design status or updates
- Before-and-after options for unbuilt spaces



- FLOOR 30
- FLOOR 17
- FLOOR 16
- FLOOR 3

Photo 360° Virtual Tours

Interactive System Base Price **USD 400**

- An HTML5-based interactive system with a standard, standalone user interface
- Interconnection of views by standard nearest order or according to the guidelines we receive
- Adding existing floor or site plans is included
- The 360° Panoramic photos are not included

Incorporating 360° Photos	
1-49 images	USD 50 / EACH
50-99 images	USD 30 / EACH
100+ images	USD 20 / EACH

360° panoramic photos are not included in the price and must be provided by the client.

Our team can help source third-party photography vendors and assist with coordination (at a standard hourly admin rate).

Generally, the tour preparation takes 2-4 working days after receiving the final 360° photos.

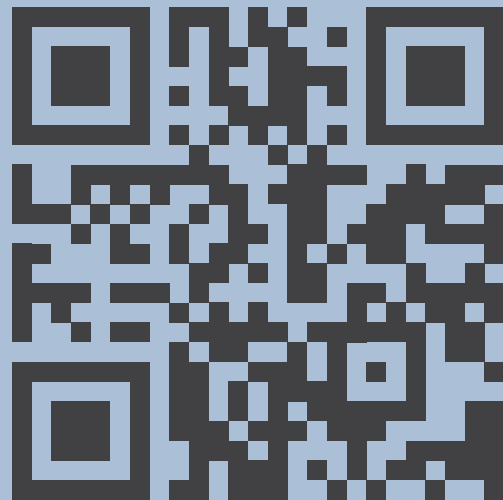
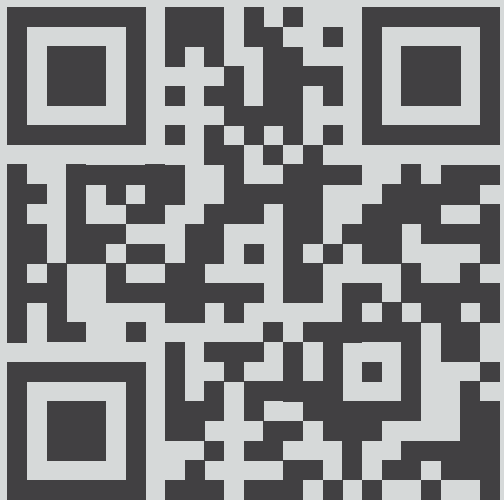
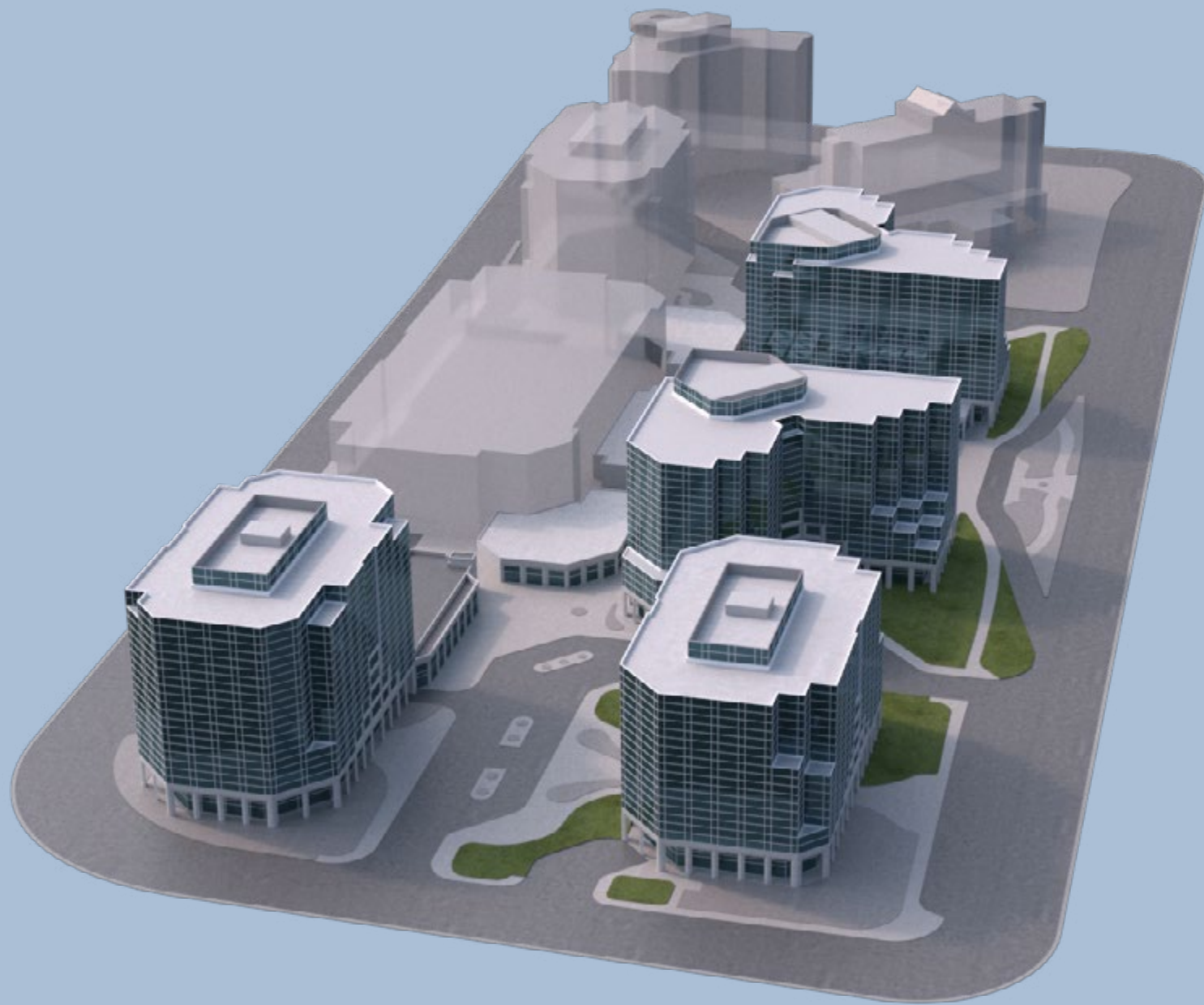
Unique user interface design, creating simple floor or site plans (see page 42), combining the tour with additional graphics, videos, galleries etc, providing hosting and domain registration or embedding to various CMS is possible. Please request a quote.



360° Viewer for a Single Building



360° Viewer for a Complex Site



360° Viewer

360° Viewer for a Single Building USD 1 400

360° Viewer for a Complex Site USD 2 000

Timing 4 days

- Includes detailed 3D modeling of a building/site
- HTML5-based Interactive System with Standard UI
- Single height turnaround with 36+ rendered frames

As this product integrates multiple rendered views of a detailed building model, significant discounts are available when ordered with Rendered 3D Stacking Plans or Photorealistic Exteriors. Price and timing can fluctuate depending on the complexity of the building and the level of detail, labels, overlays, integration and viewing options. Please consult your Edgite representative for project-specific pricing and timing.

What to include in the brief?

- Site plans, floor plans, façade plans and other data to assist in the modeling process (ceiling heights, section plans, finishes)

Recommended use:

- 360° detailed overview of a building/site
- To show future buildings (planned or under construction)
- To highlight amenities/tenants/access



Interactive Labeled Aerials

Interactive System Base Price	USD 400
Views (1-10 photos/ 360° spins)	USD 50 / EACH
Unique User Interface Styling	USD 200
Simple Text Labels	USD 100
Building Highlights + Labels	USD 250
Unique Labels/Logos/Icons	REQUEST A QUOTE

The 360° panoramic aerial photos are not included in the price and must be supplied.

Our team can source third-party helicopter/drone vendors and assist with photography coordination (at a standard hourly admin rate).

Dense labels (50+ for helicopter and 30+ for drone views), special interactivity/editing requests, or inadequate source files may affect the above prices.

Labeling/highlighting costs are typically multiplicative of the requested views.

360°+ Rendering

Interactive 360°+ Rendering

USD 1 600

- Interactive System with Standard UI
- 3D modeling and finishes of a building
- A single panoramic rendered view/spin

Additional 360° Panoramic Views

USD 500

What to include in the brief?

- Panoramic photo for the base of the composition
- Site plans, floor plans, façade plans and other data to assist in the modeling process (ceiling heights, section plans, finishes)
- Any references or style example images

Recommended use:

- To show future building(s) in a real-life manner
- Immersive before-and-after options for planned buildings

Price and timing can fluctuate depending on the building's complexity and the level of detail required. The 360° panoramic aerial photos are not included in the price and must be supplied. Our team can source third-party helicopter/drone vendors and assist with photography coordination (at a standard hourly admin rate).

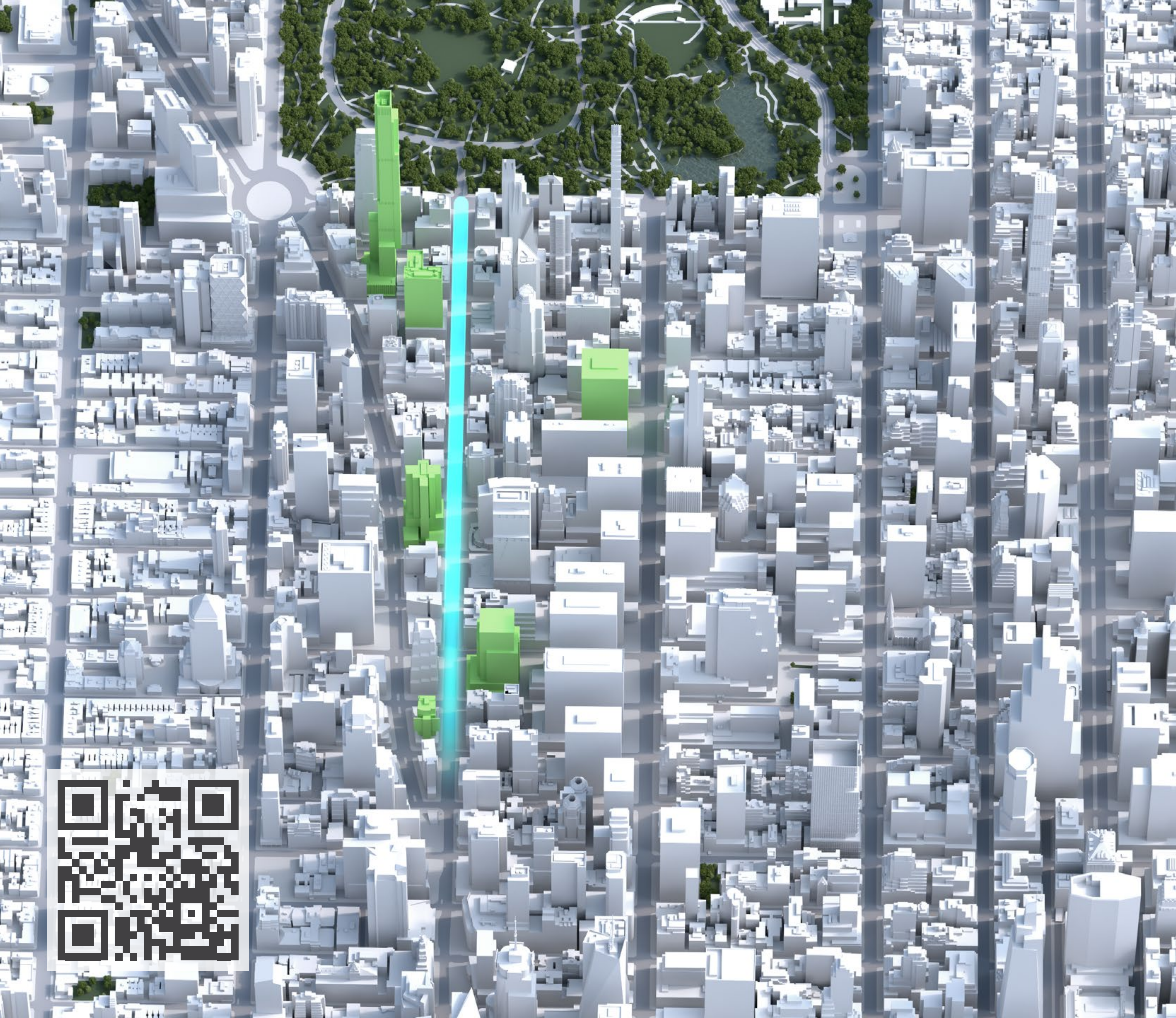


3D Animation

Most of our vector and rendered graphics elements can be animated upon request. These animations can be combined with video edits for a more informative multimedia experience. The most frequent ones are listed on the following pages.

Due to the complex nature of the rendered elements and the various animation methods, price and timing can fluctuate. Consult your Edgite representative for a formal quote on your project specifics.





Animated 3D Maps

Animated 3D Map
from existing city models
for any location worldwide
(8-12 seconds)

USD 700
REQUEST A QUOTE

Timing

2 days

Add-ons:

Detailed Building Model

USD 250

Color Overlay Highlights

USD 30/EACH

Labels

USD 20/EACH

Multiple angles, longer run-times, multiple detailed/textured highlights, and other unique elements might be quoted on a per-project basis to allow for discounts.

Animated 2D Maps

Animated Vector Map

(8-12 seconds sequence)

USD 300

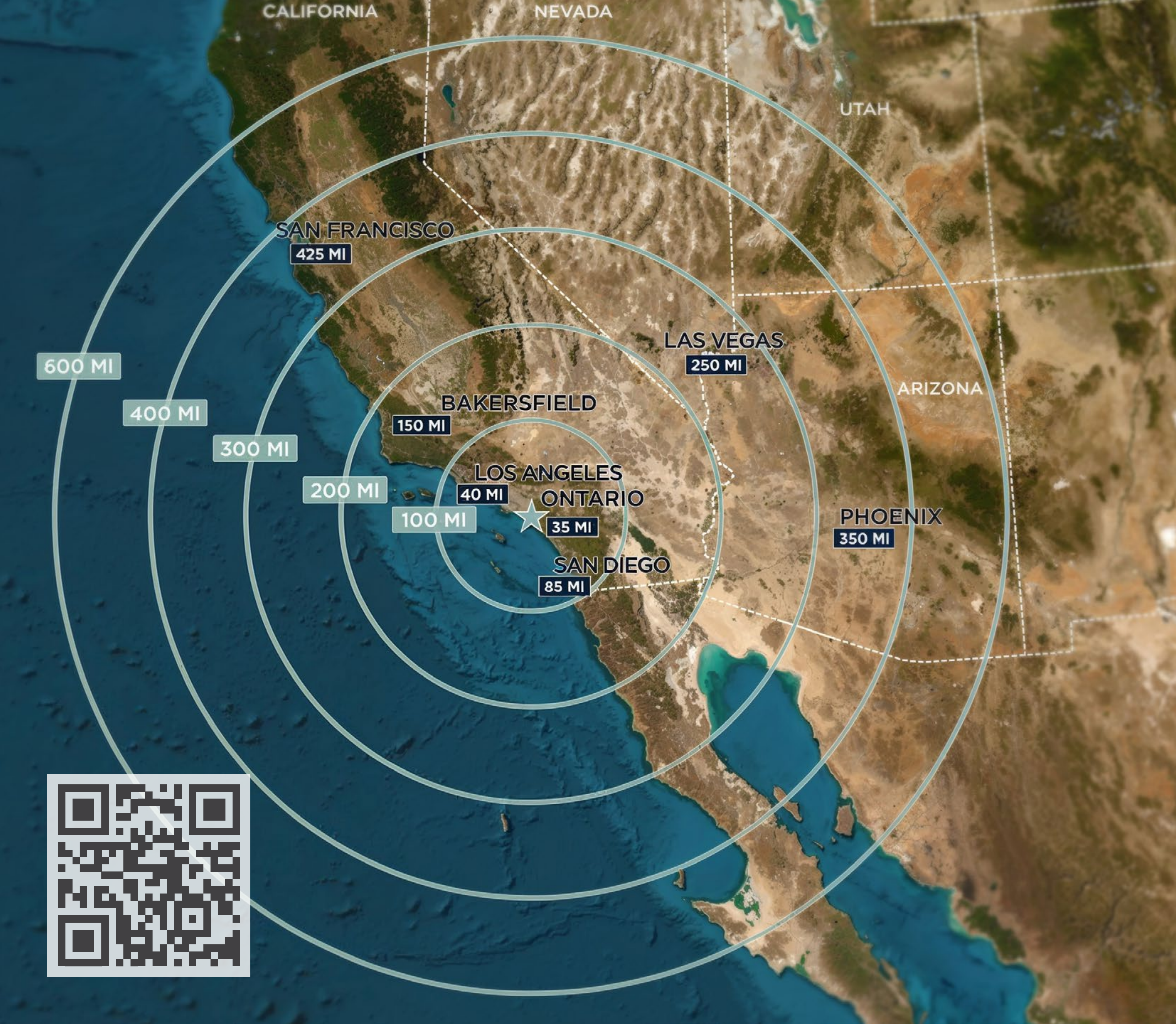
(+ vector map pricing)

Timing

2 days

See the Vector Maps section for pricing and other details.
The vector map is also supplied.

*Multiple/dynamic zoom levels and extended run times might be
quoted per-project basis to allow for discounts.*



Build-up Sequences

Still Build-up Sequence
Composed into 3D surroundings

USD 500

Motion Build-up Sequence
Composed into 3D surroundings

USD 700

Motion Build-up Sequence
Tracked into Aerial Footage

USD 400

Timing

3 days

The modeling of the property is not included in the above figures. Price and timing can fluctuate depending on the complexity of the building and the level of detail required for the overall scope. Please consult your Edgite representative for project-specific pricing and timing.

What to include in the brief?

- Floor plans, façade plans, and other data to assist in the modeling process (ceiling heights, section plans, finishes, etc.) - any missing, incomplete or low-quality source files could increase costs
- Confirmation of the viewing angle
- Any references or style example images



Animated Site/ Stacking Plans

Animated Stacking Plan with
3D Modeled Surroundings

USD 1 400

Animated Stacking Plan
tracked into Aerial Footage

USD 1 200

Timing

3 days

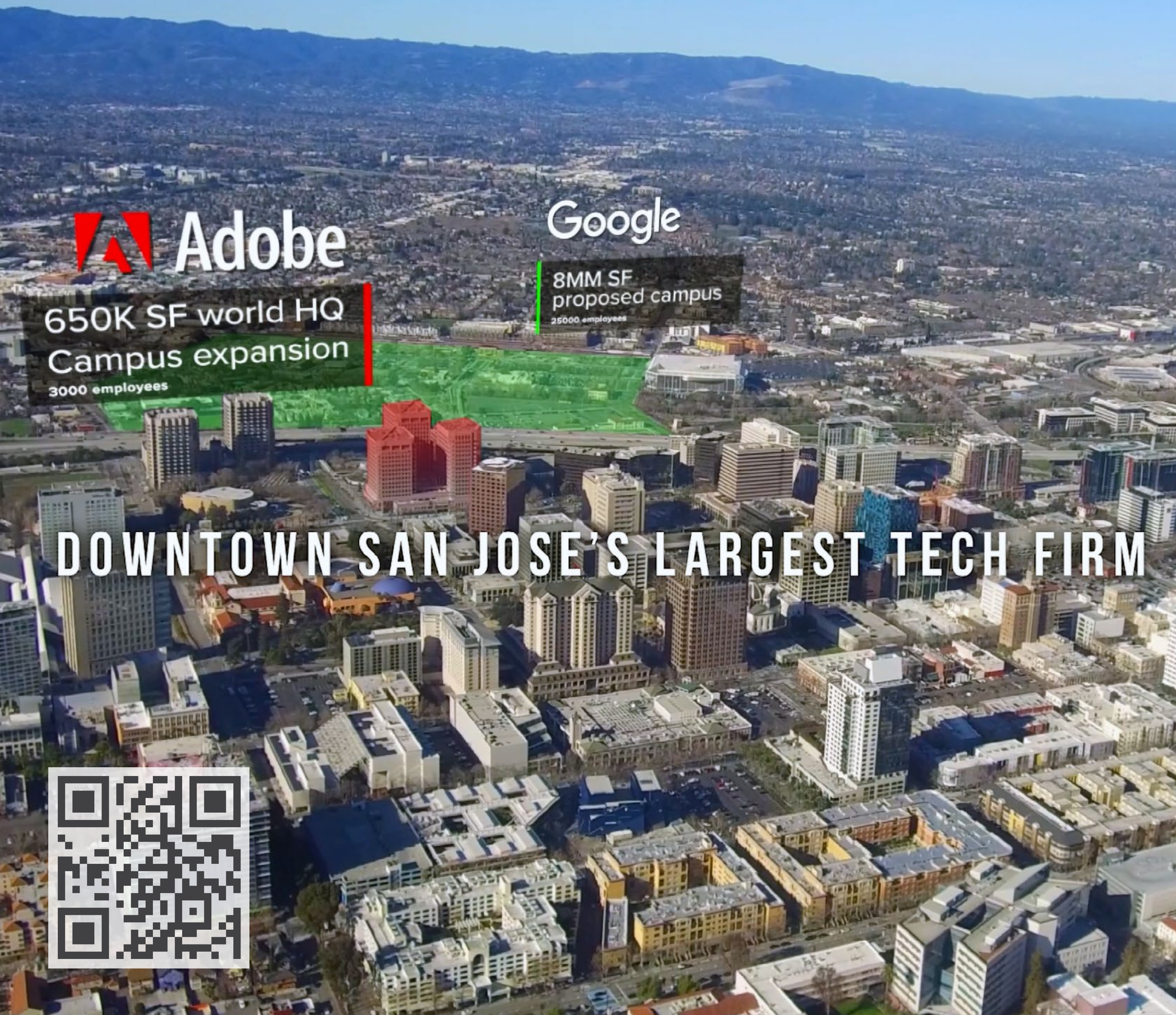
Extras:

- Extended surroundings/details (combined with 3D maps)
- Interior details, labels, unique overlays

What to include in the brief?

- Floor plans, façade plans, and other data to assist in the modeling process (ceiling heights, section plans, finishes, etc.) - any missing, incomplete or low-quality source files could increase costs
- Confirmation of the viewing angle
- Any references or style example images





DOWNTOWN SAN JOSE'S LARGEST TECH FIRM



Video Editing

A short marketing video based on a script and key footage supplied. We are keen to explore the specifics and provide support throughout each production phase.

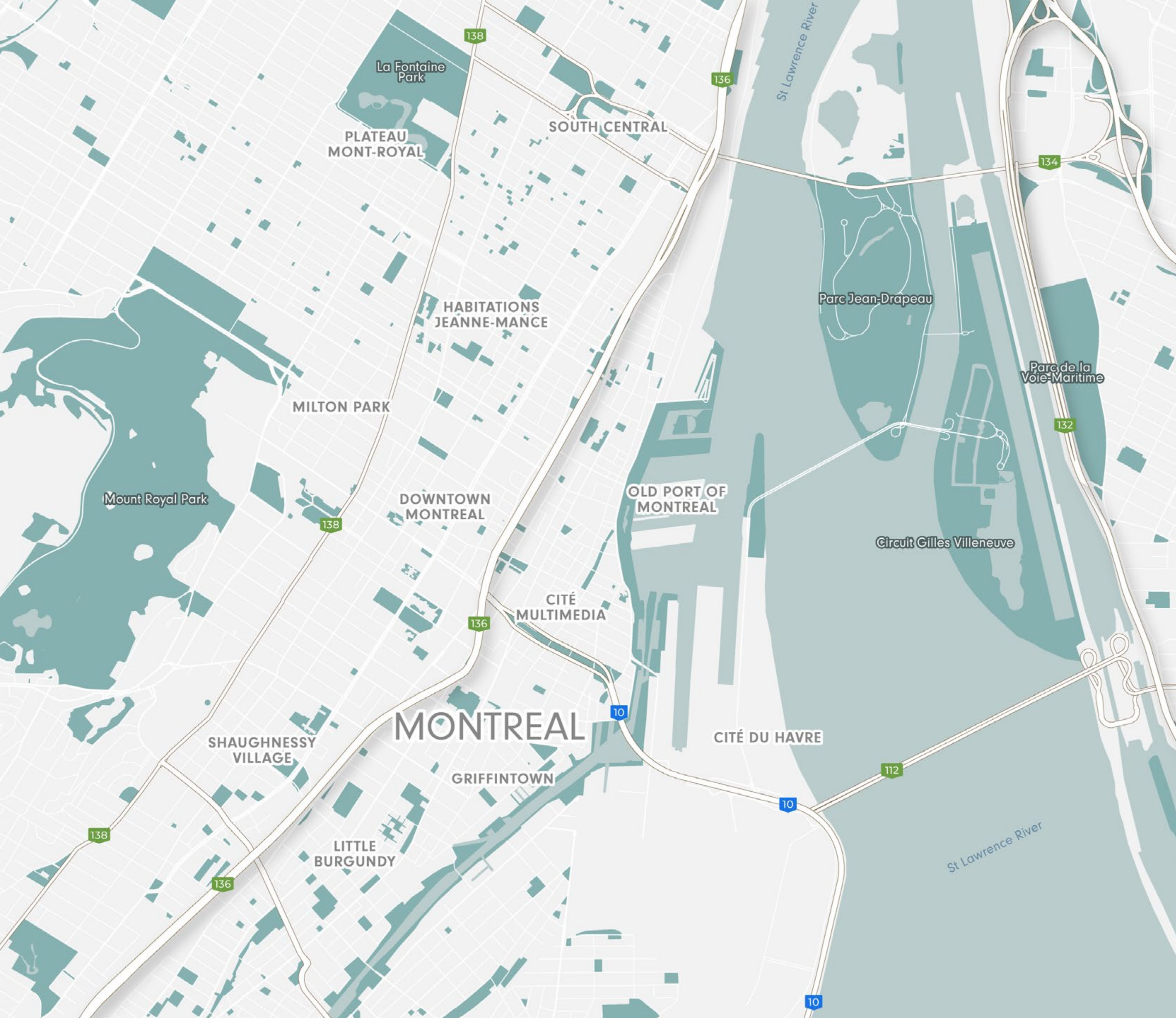
Marketing Video <60 sec	USD 1 400
Marketing Video 60 - 180 sec	USD 2 000
Marketing Video 180+ sec	USD 3 000

Modifications:	USD 100/HOUR
• Video editing/VFX	

Same-day or expedited edits may be charged extra and will be advised upon receipt.

Add-ons:	
• Aerial tracking	USD 100
• Voiceover+editing	USD 200
• Footage/audio sourcing	USD 100
• Unique typography, graphics, charts, intro-outro sections	REQUEST A QUOTE

Footage and script need to be provided. Low-quality, insufficient, or missing source files may increase total costs. Aerial tracking costs vary based on the number of labels, highlights, or overlays required. The typical price covers two rounds of edits. Significant changes to the footage or script are excluded.



Vector Maps

2D Vector Base Map USD 300

- Basic location information
- Automatically generated labels (readable size and density) for the default print size (landscape Letter)
- We will supply editable, layered source files

Overlay Map USD 350

- 2D Vector Base Map + data/satellite imagery overlay

Inset with a Similar Level of Detail USD 150

Manually Cleaned-up Layers USD 100

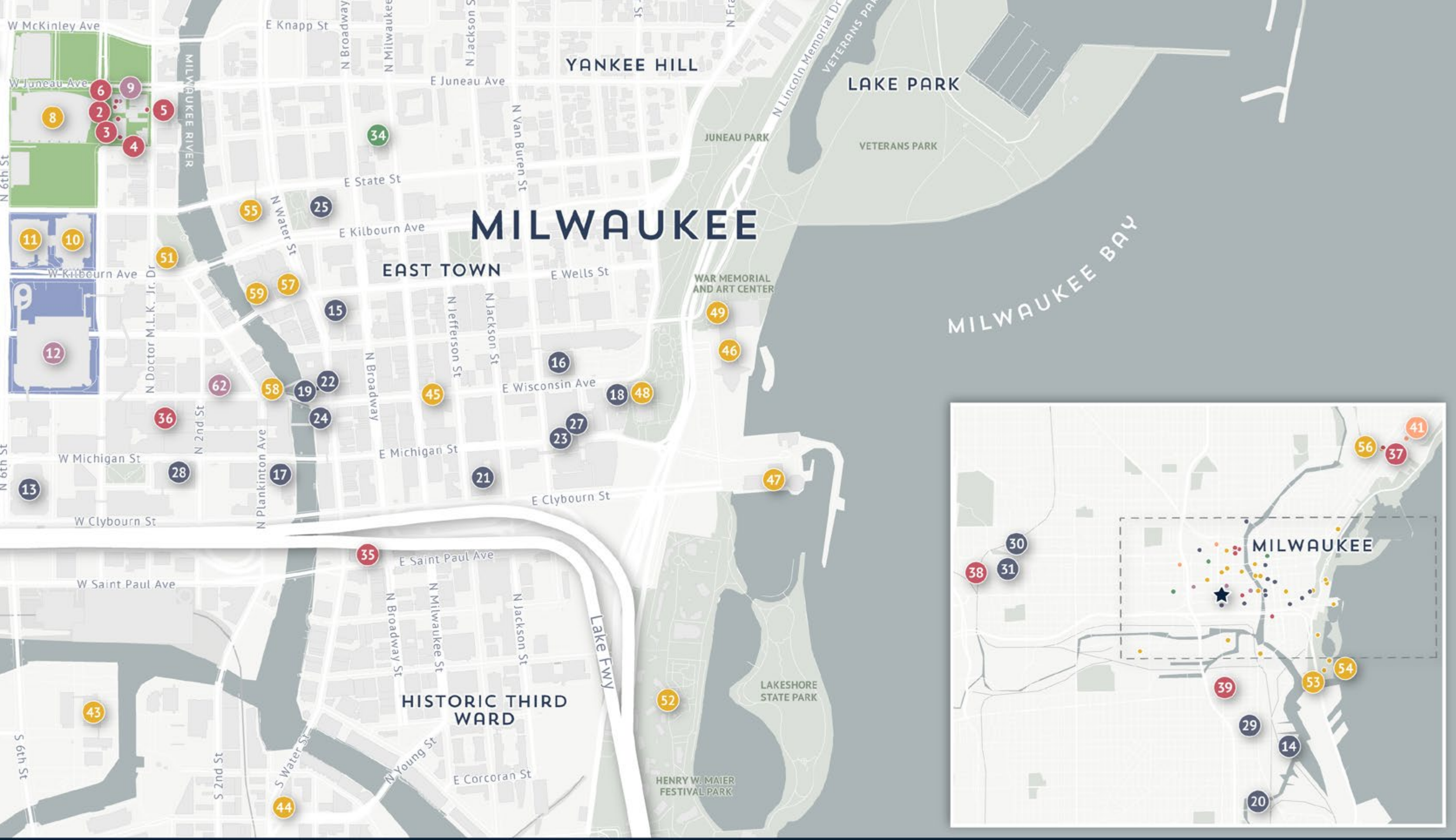
Timing by the next day

What to include in the brief?

- The property name/address to highlight
- The print size and orientation of the map - if different from the default (landscape Letter), ideally with a marked-up screenshot of the area extent
- List of manual labels to include (can affect pricing), color scheme, fonts and any other style specification based on reference file



Amenity & Comp Maps



2D Vector Amenity Map USD 450

- Geo-located amenity list or public amenity database
- We will supply editable, layered source files

2D Vector Comp Map USD 400

- Geo-located comp set of exact addresses with a legend
- We will supply editable, layered source files

Inset with a Similar Level of Detail USD 200

Additional Manual Labels/Layers (e.g. transportation, demographics data) USD 50

Timing 2 days

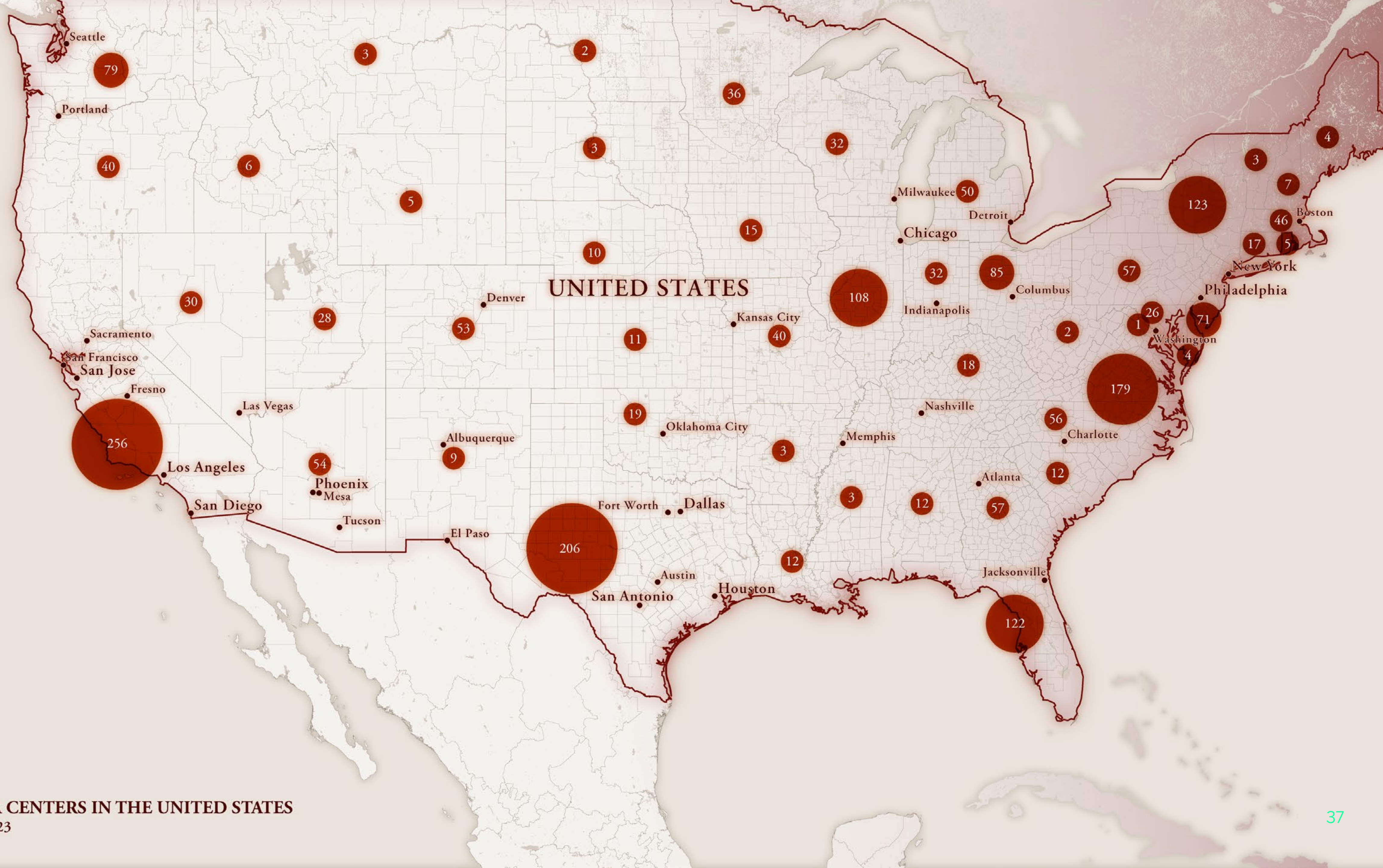
- CORPORATE**
- 18 Kroger: Roundy's Supermarkets, Inc. (HQ)
 - 19 The Marcus Corporation (HQ)
 - 20 Rite-Hite (HQ)
 - 21 Johnson Controls
 - 22 Wells Fargo
 - 23 US Bank
 - 24 Chase
 - 25 MGIC Investment Corporation (HQ)
 - 26 MANPOWER (HQ)
 - 27 Robert W. Baird & Co. Incorporated (HQ)
 - 28 WEC Energy Group (HQ)
 - 29 Rockwell Automation (HQ)
 - 30 Harley-Davidson Motor Company (HQ)
 - 31 MillerCoors Brewing Company

- EDUCATION**
- 32 Milwaukee Area Technical College Downtown Milwaukee Campus
 - 33 Marquette University
 - 34 Milwaukee School of Engineering
- FOOD AND DRINK**
- 35 Milwaukee Public Market
 - 36 3rd St. Market Hall
 - 37 Crossroads Collective
 - 38 Miller, The Brewery
 - 39 Zócalo Food Park
- HEALTHCARE**
- 40 Aurora Sinai Medical Center
 - 41 Ascension Columbia St. Mary's Hospital Milwaukee

- LEISURE AND CULTURE**
- 42 Milwaukee Public Museum
 - 43 Harley-Davidson Museum
 - 44 National Bobblehead Hall of Fame & Museum
 - 45 Sculpture Milwaukee
 - 46 Milwaukee Art Museum
 - 47 Discovery World
 - 48 Betty Brinn Children's Museum
 - 49 Milwaukee County War Memorial Center
 - 50 Jewish Museum Milwaukee
 - 51 Milwaukee County Historical Society
 - 52 Summerfest
 - 53 American Family Insurance® Amphitheater
 - 54 BMO Harris Pavilion
- 55 Marcus Performing Arts Center
 - 56 The Oriental Theatre (Milwaukee Film Festival)
 - 57 The Pabst Theater
 - 58 The Riverside Theater
 - 59 Patty & Jay Baker Theater Complex
 - 60 Potawatomi Hotel & Casino
- MEETINGS AND EVENTS**
- 61 The Wisconsin Club City Club
 - 62 Sixth Floor Wedding and Event Venue

What to include in the brief?

- The property name/address to highlight
- List/spreadsheet of exact addresses or amenity categories
- The print size and orientation of the map - if different from the default (landscape Letter), ideally with a marked-up screenshot of the area extent
- Color scheme, fonts and any other style specification based on reference file



LIST OF DATA CENTERS IN THE UNITED STATES
as of December 2023



Logo Maps

Amenity Logo Map (partial) **USD 500**

- Geo-located amenity list or public amenity database
- A selection of pins converted to logos (important brands)
- We will supply editable, layered source files

Amenity Logo Map (complete) **USD 800**

- Geo-located amenity list or public amenity database
- All requested amenity logos researched/adjusted
- We will supply editable, layered source files

Additional Labels **USD 100**
(e.g. transportation, demographics, comparable properties)

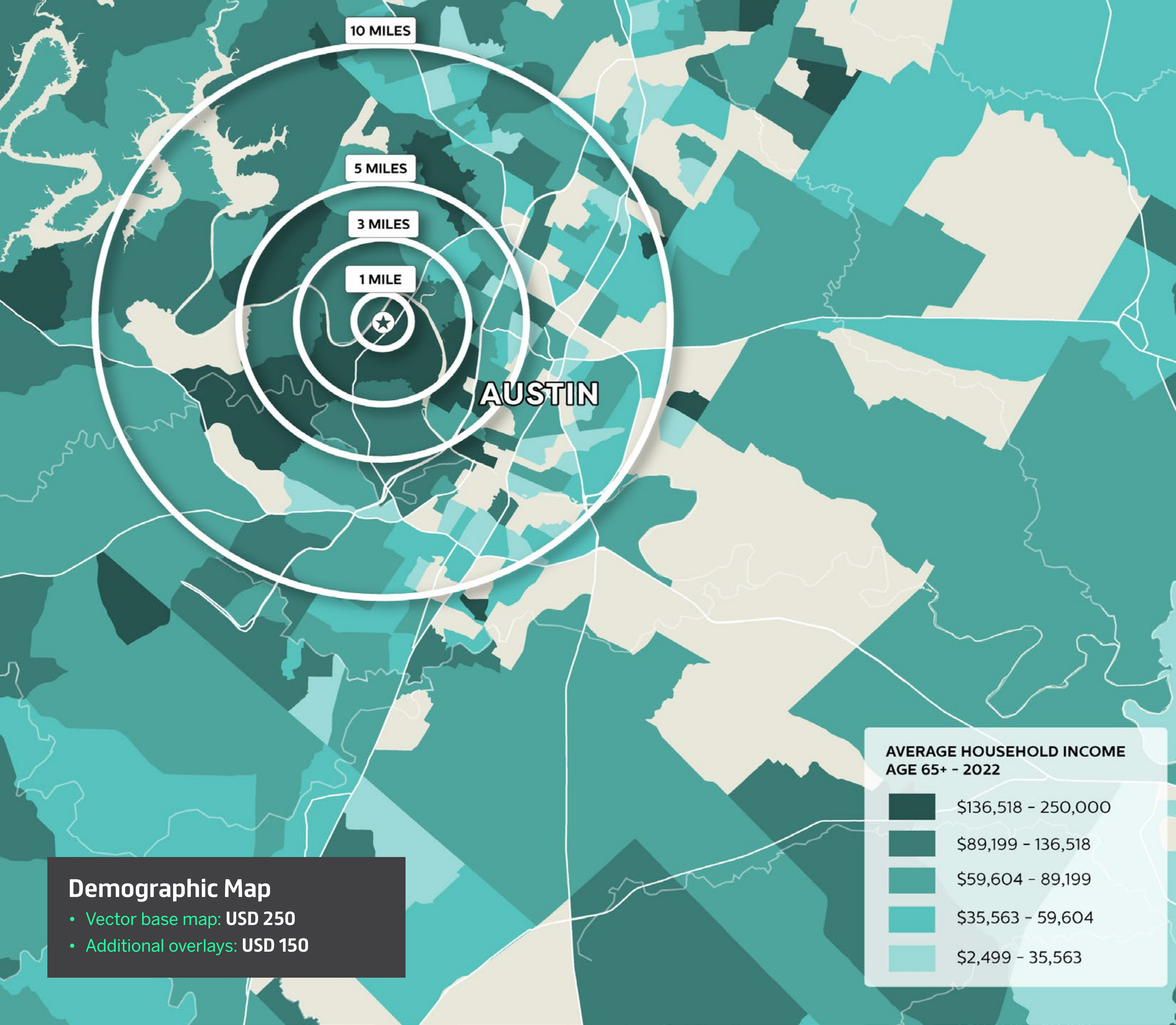
Timing **3 days**

- What to include in the brief?**
- The print size and orientation of the map - if different from the default (landscape Letter), ideally with a marked-up screenshot of the area extent
 - Color scheme, fonts and any other style specifications
 - Amenity list (split into groups if only partial logo requested)

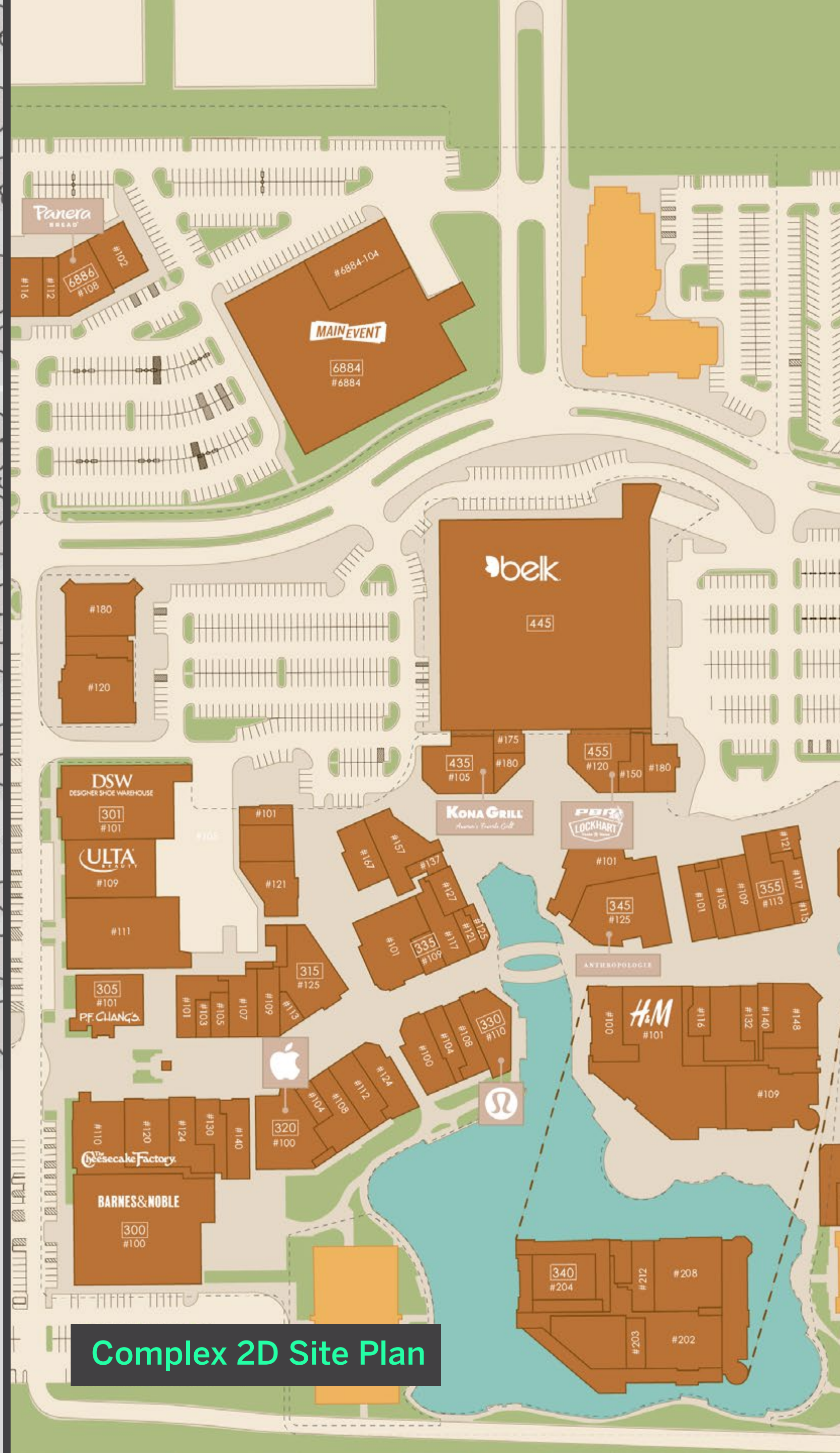
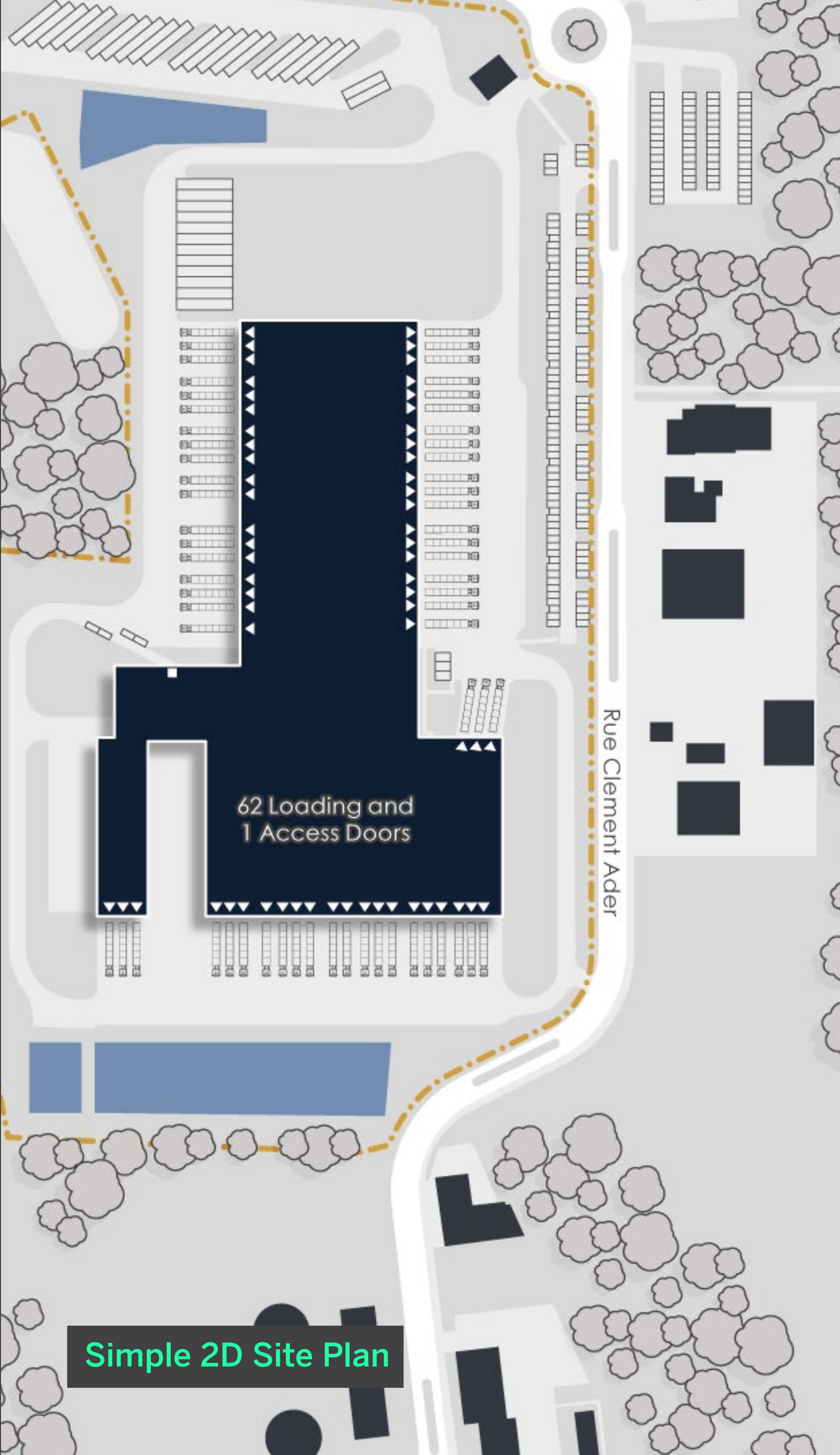
- For add-ons:**
- List of additional addresses for geo-location - including names, addresses, and categories
 - Specification of legend/labels/overlays

Extra Info/ Maps

- Typical prices and timing are applicable for any scale and location worldwide.
- Please request a quote for unique icons for plotting different categories/features.
- Please request a quote for heat maps, isochronal drive/walk time, public transportation access/info-graphic overlays, or any custom map information.
- The standard size of the maps is landscape-oriented Letter. Significantly different sizes or content densities may result in an extra charge.
- A 50% surcharge may apply for expedited orders.
- Discounts may apply if multiple maps with the same style are ordered at the time of quote.
- Discounts may apply if timing allows. Flexible turnaround times could mean lower per-item costs for batch orders.
- The timing is calculated for a single map. We will confirm the production schedule for batch orders.
- We do not validate the overlay information you or third parties provide. A surcharge may apply if additional research or validation is necessary.







2D Site Plans

Simple 2D Site Plan (Single Building) **USD 150**
 Additional interior layout details **USD 50**
 Additional exterior details **USD 50**
(surrounding buildings, roads)

Complex 2D Site Plan (Complex Site) **USD 400**
 Additional interior layout details **USD 50**
 Additional details **USD 50**
(tenant details/logos, surroundings)

Timing (Simple) **1-3 days**
Timing (Complex) **2-4 days**

- What to include in the brief?**
- Architectural or cadastral source files (lower quality files, sketches, or satellite imagery can be used, but could increase turnaround time and price)
 - Page size (or element size if not full page)
 - Color scheme and fonts
 - Any additional information to include (labels, dimensions, North arrow, tenant summary)



Complex 2D Floor Plan

2D Floor Plans

Minimal 2D Floor Plan*	USD 50
Simple 2D Floor Plan	USD 150
• Additional overlays (e.g. texts, logos)	USD 50
Complex 2D Floor Plan	USD 300
• Additional overlays (e.g. texts, logos, furniture)	USD 50
Timing	1-4 days

What to include in the brief?

- Architectural source files
- Page size (or element size if not full page)
- Color scheme and fonts
- Any additional information to include (labels, dimensions, North arrow, tenant summary)

Please note:

Price and timing can fluctuate depending on the required level of detail and source file quality - please consult your Edgite representative for a formal quote.

* Only available as mini-maps for interactive tours. For other uses, please request a custom quote.

Extra Info/ Site & Floor Plans

- Discounts may apply if multiple elements with the same style are ordered at the time of quote.
- Discounts may apply if timing allows. Flexible turnaround times could mean lower per-item costs for batch orders.
- A 50% surcharge may apply for expedited orders.
- Low-quality, insufficient, or missing source files can lead to higher total costs.
- The timing is calculated for a single floor/site plan with no add-ons. We will confirm the production schedule for batch orders.
- We do not validate the overlay information you or third parties provide. A surcharge may apply if additional research or validation is necessary.

Raster Line Drawing based on a 3D model

- Structure modeling: USD 700 (can vary greatly)
- Rendering cost: USD 100



Line Drawings

Raster Line Drawing

USD 500

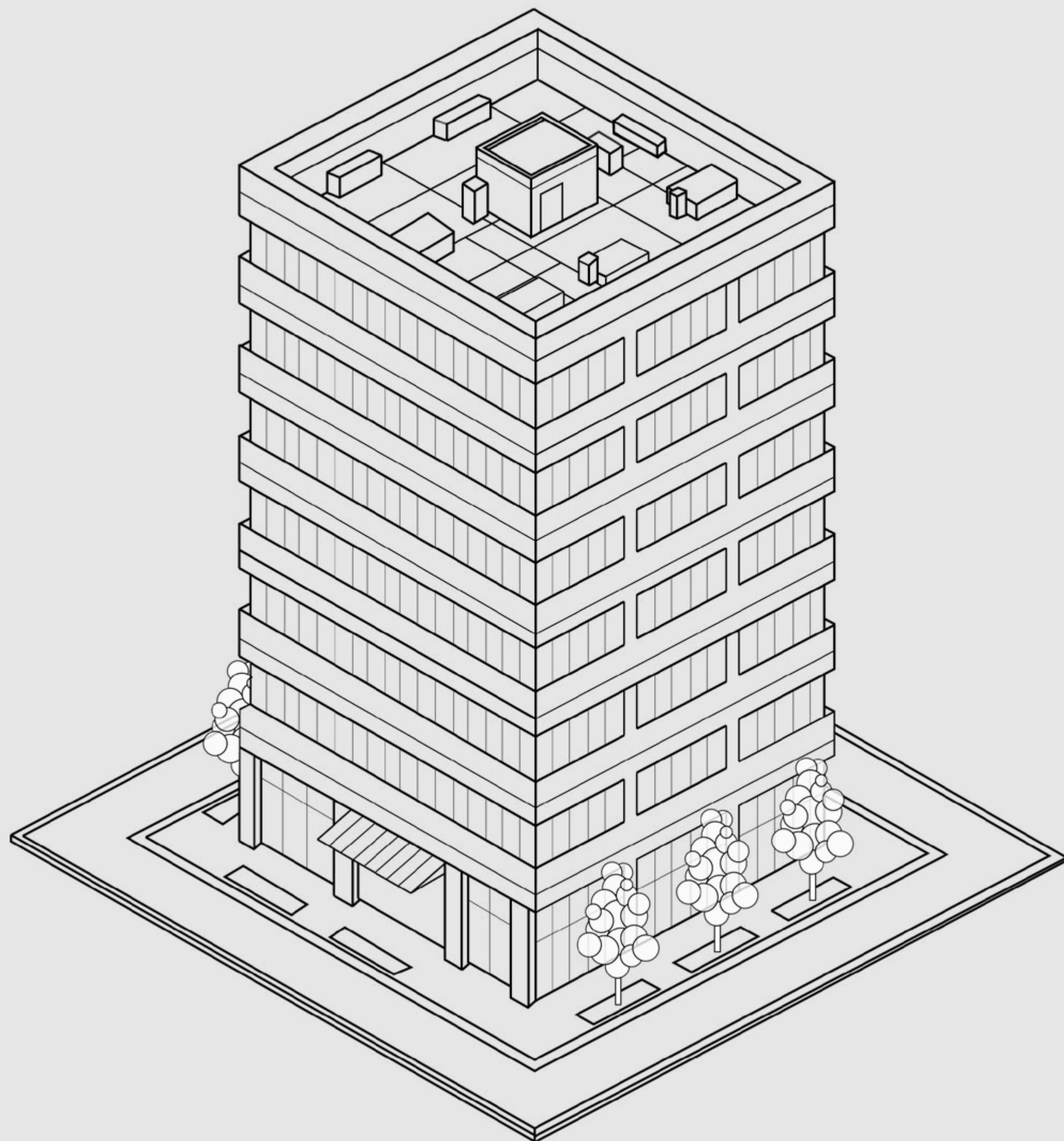
Raster PNG line drawing based on the 3D modeled property (easy to adjust the angle, distortion, field of view, stroke weights are linked to the exact drawing dimensions)

Vector Line Drawing

REQUEST A QUOTE

Editable vector file based on a photo (exact match), perspective grid (if the property is simple enough) or vectorizing a 3D raster line drawing.

Missing, incomplete or low-quality source files could increase costs. Price and timing can fluctuate depending on the complexity of the building and the level of detail required for the overall scope. Consult your Edgite representative for your project specifics, including multi-rendering discounts.



Vector Line Drawing based on a photo

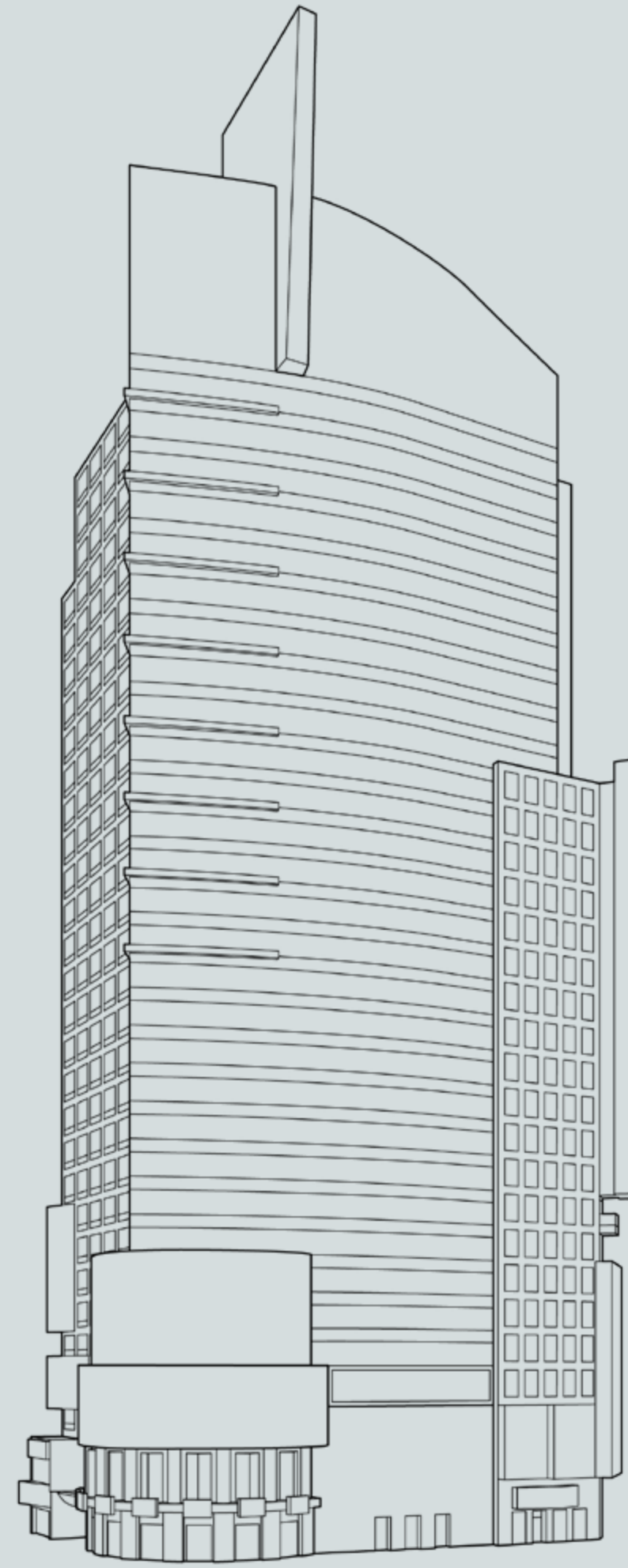
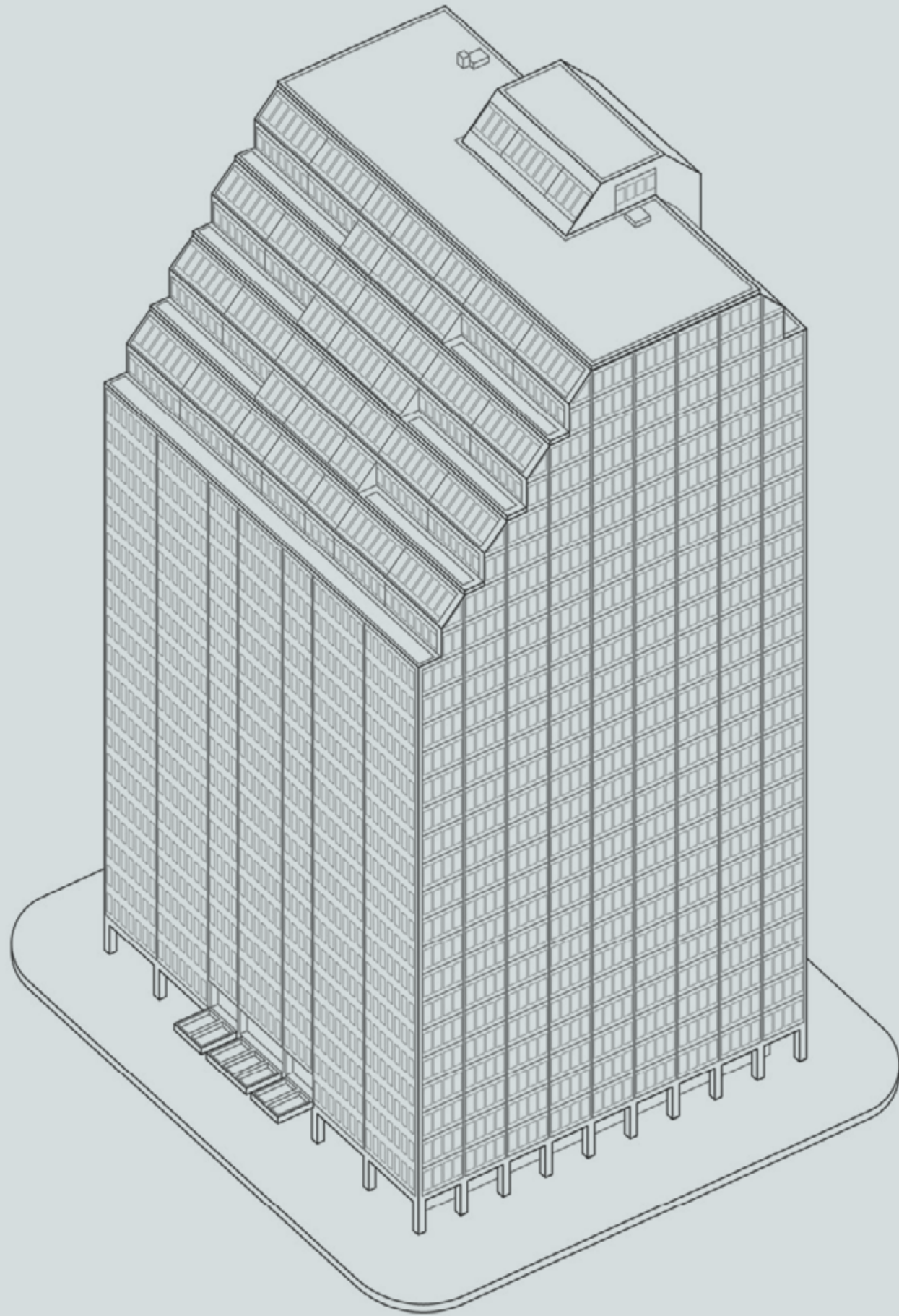
- Manual tracing: USD 400 (can vary greatly)



Vector Line Drawing based on a photo

- Manual tracing, colored overlays: USD 500 (can vary greatly)

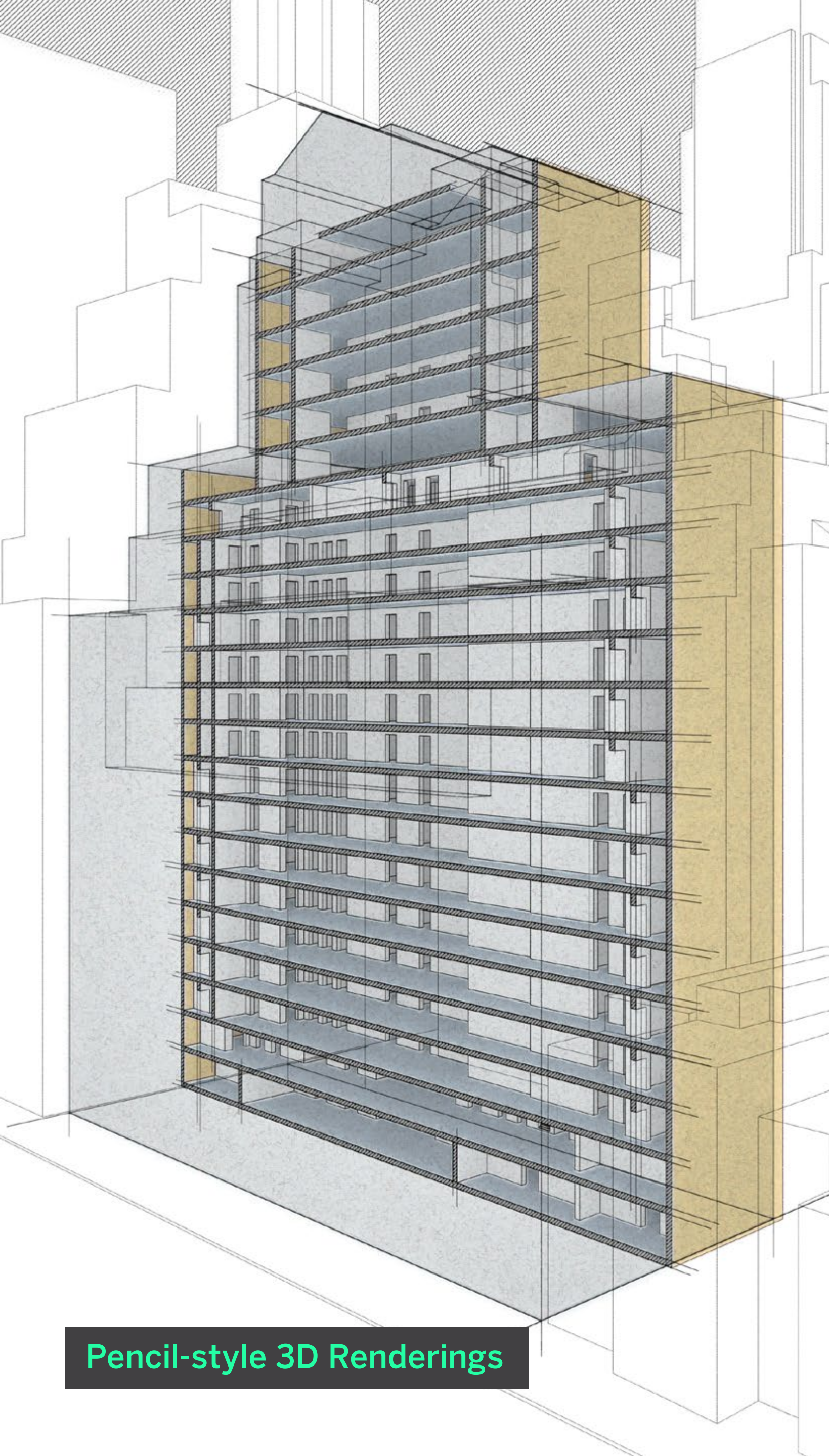
Line Drawings



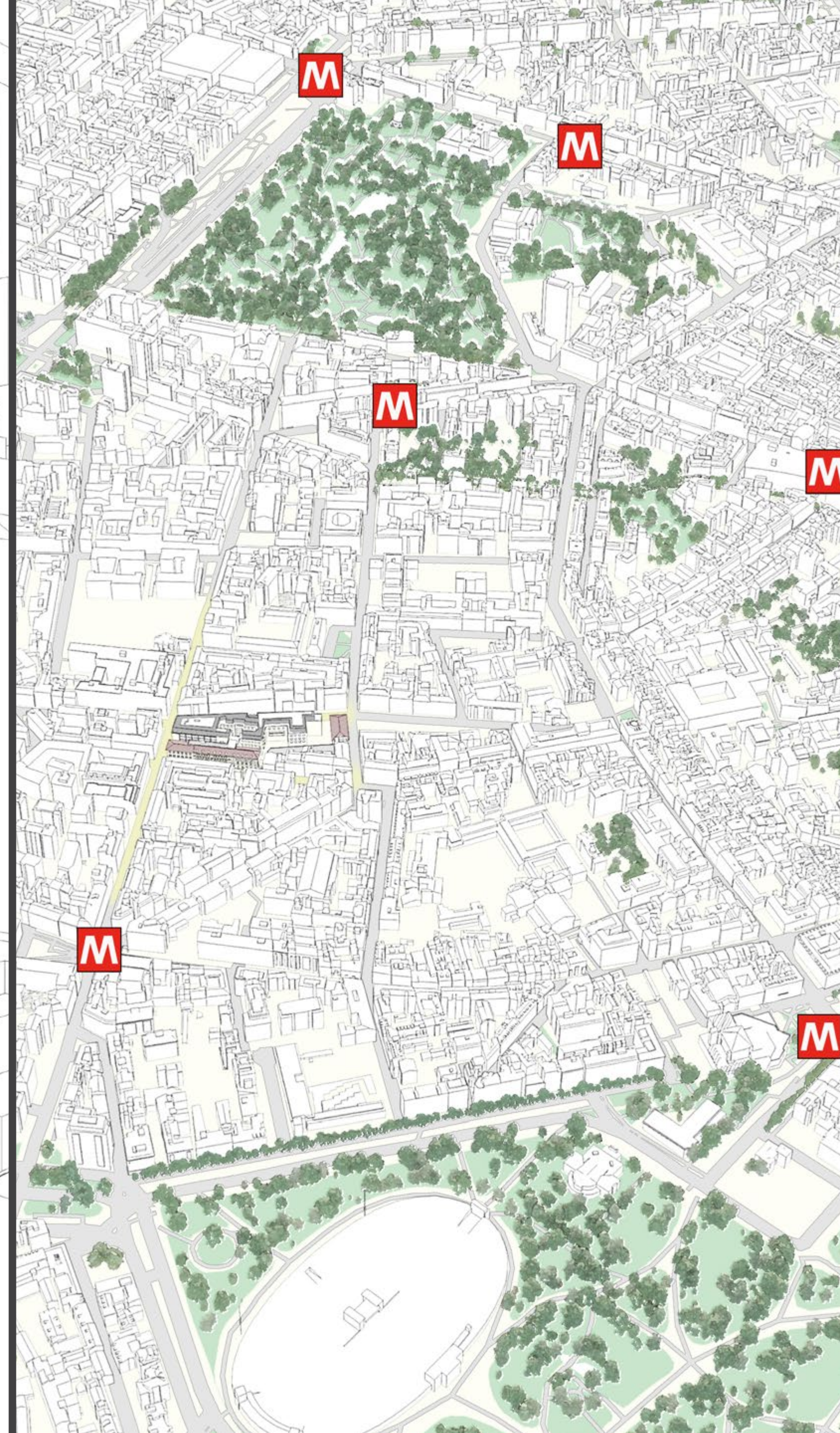
Vector Line Drawing based on a 3D model

- Structure modeling + rendering: USD 500+ (can vary greatly)
- Manual vector tracing: USD 400 (can vary greatly)

2D line drawings are rendered or traced in any perspective or orthographic view based on 3D models or other source files. Due to various factors, price and timing can fluctuate. Please consult your Edgite representative for further details and a formal quote on your project specifics.



Pencil-style 3D Renderings



Custom Requests

Pencil-style Rendered 3D Map Including Base 3D Map	USD 800
Pencil-style Rendered 3D Stacking Plan	REQUEST A QUOTE
Custom Line Drawing	REQUEST A QUOTE
Custom Photo Comp/Edit	REQUEST A QUOTE

Price and timing can fluctuate due to various factors. Consult your Edgite representative for a formal quote on your project specifics.

Custom Requests

Booklet Design

Including All Maps and Graphics

Infographics

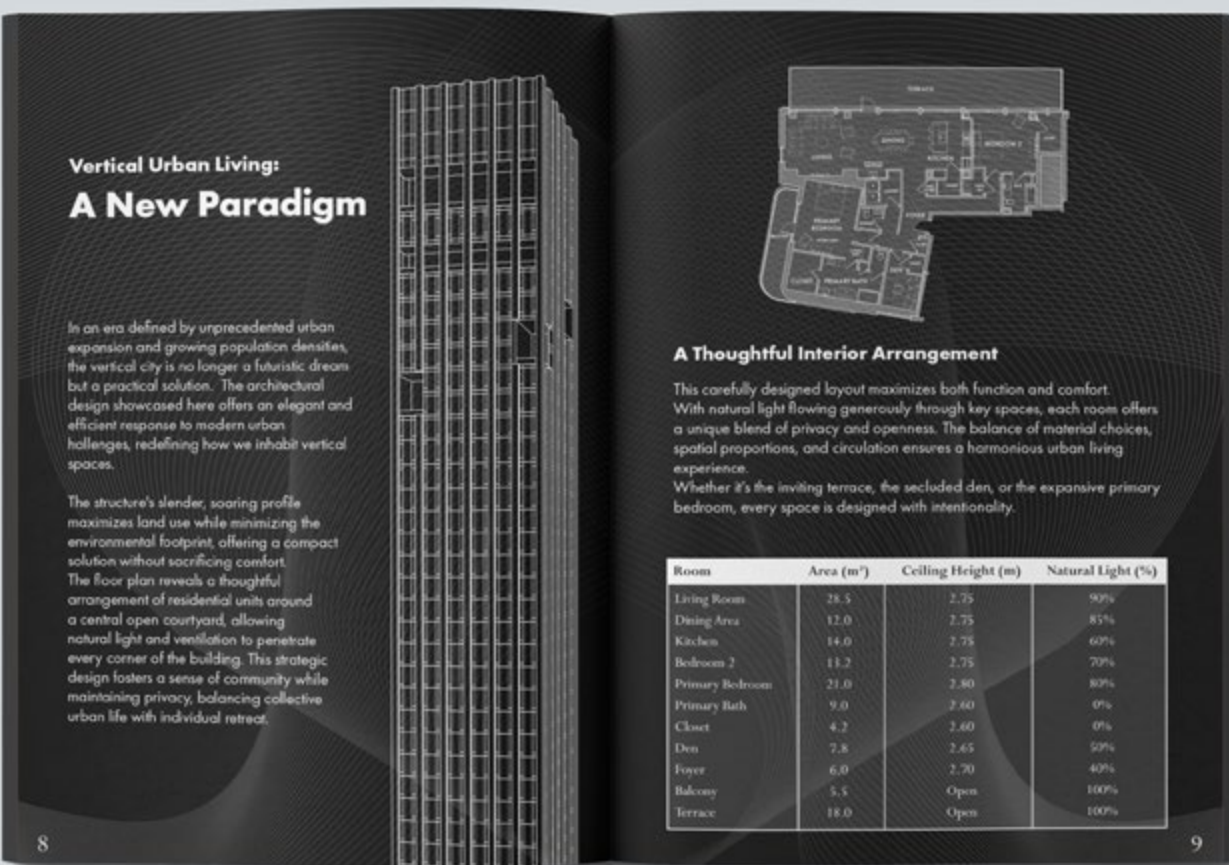
Other Custom Requests

REQUEST A QUOTE

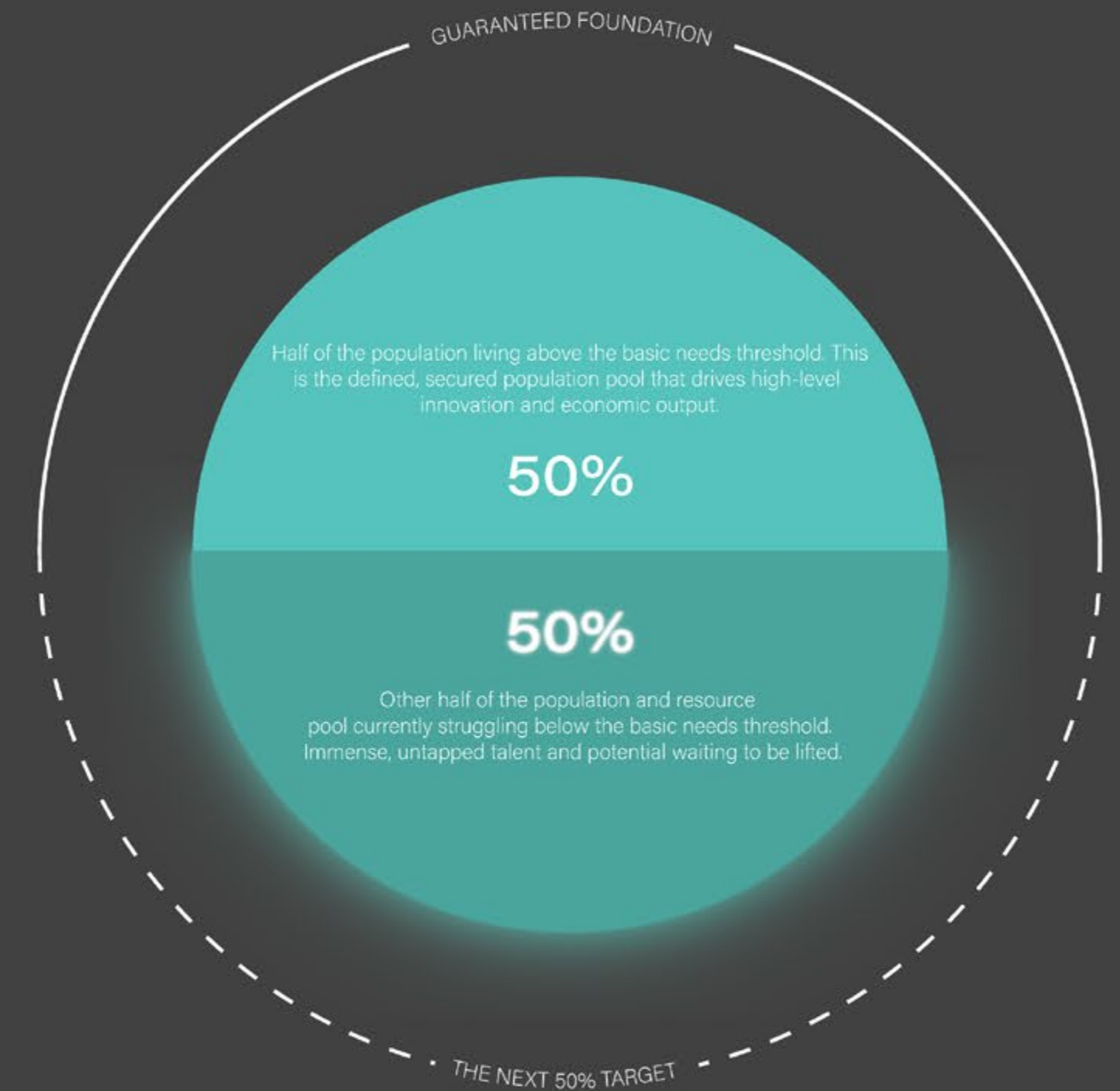
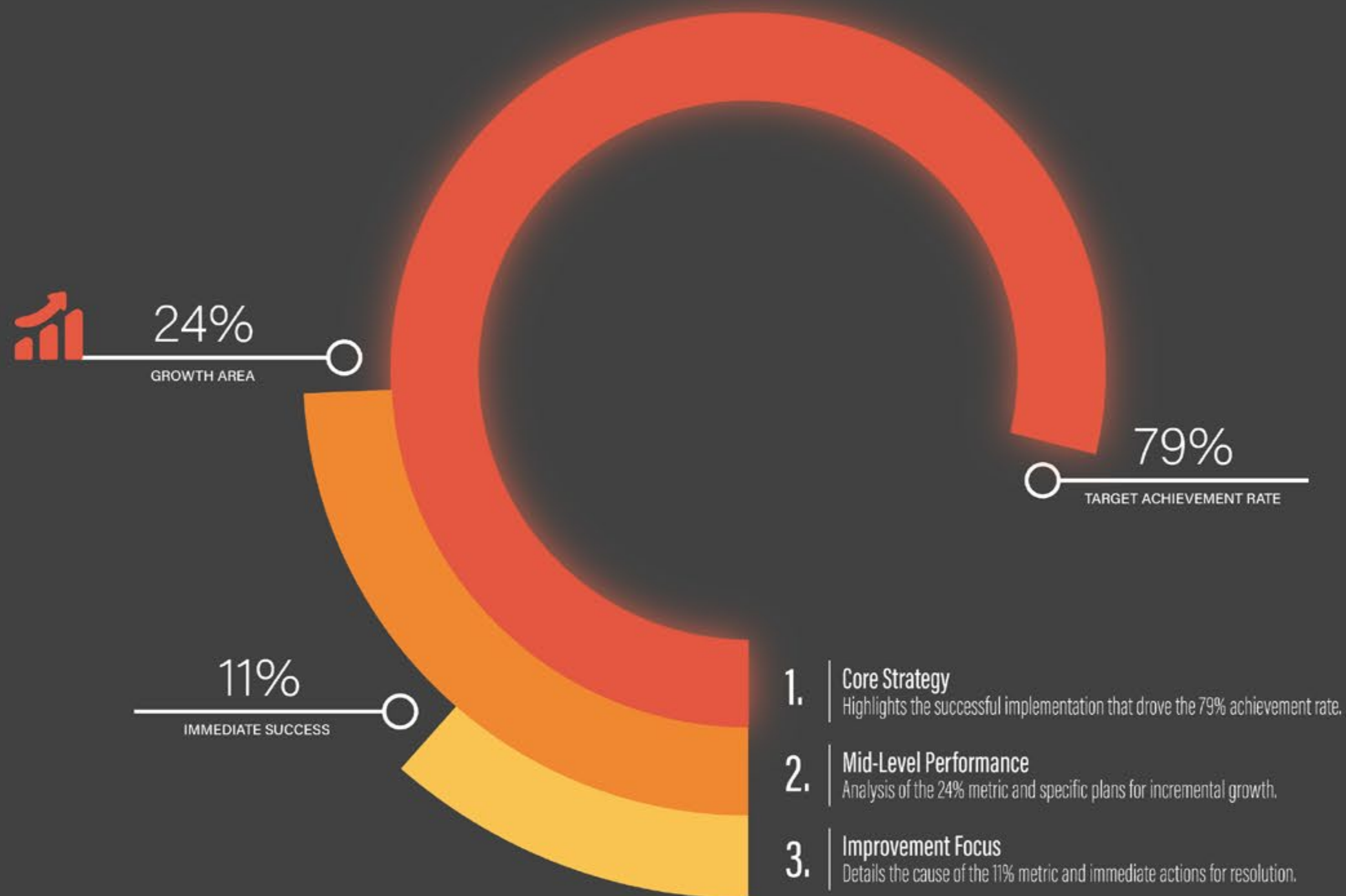
REQUEST A QUOTE

REQUEST A QUOTE

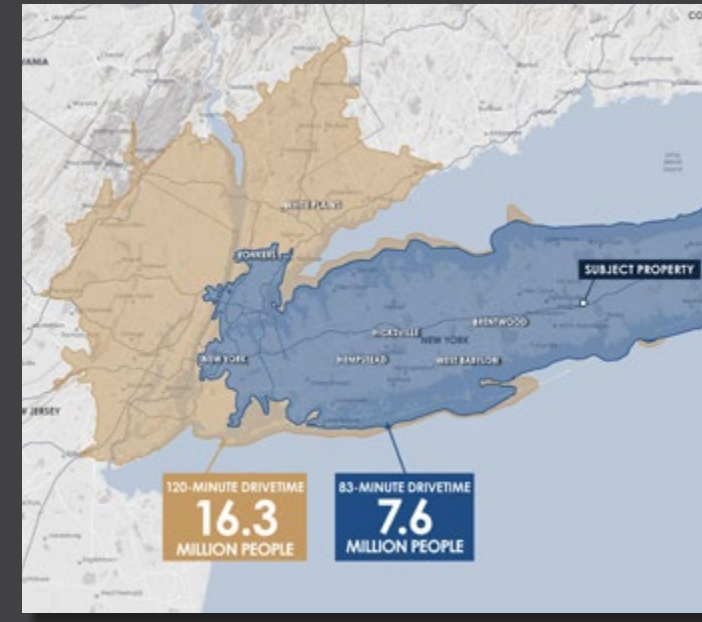
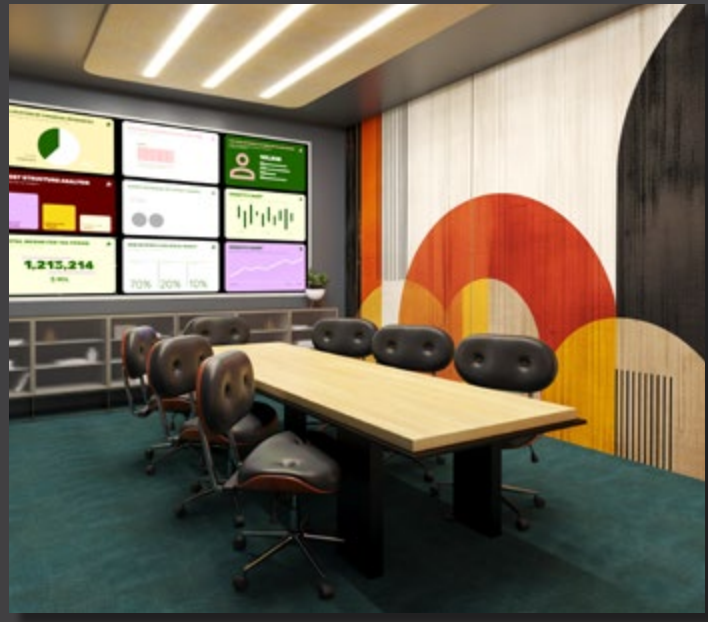
Booklet Design



Price and timing can fluctuate due to various factors. Consult your Edgite representative for a formal quote on your project specifics.



more references online



Please get in touch with us via
hello@edgite.com