



**EDGITE**

# 3D Stacking Plans 2025

# how we work?

Edgite is a real estate marketing production studio based in Budapest. We fuse GIS data, 3D modelling, and extensive asset libraries with graphic design and multimedia expertise to revolutionize property showcasing.

Our collaborative team creates informative maps, engaging graphics, and stunning visuals. We help you turn listings into memorable stories that captivate audiences.

Choose **Edgite** to transform your real estate presentations. Our creative methods ensure your offerings are unique and appealing to potential buyers and tenants.



# 3D Stacking Plans

- Simplified 3D Stacking Plans
- Detailed 3D Stacking Plans
- Animated 3D Stacking Plans
- 360° Viewer



Saks

# 3D Stacking Plans

## Simplified 3D Stacking Plan

Simple property/major structural elements

**GBP 400+**

## Detailed 3D Stacking Plan

Complex property/detailed elements

**GBP 650+**

## Additional Surroundings/Landscaping

- from third-party sources/manual modelling
- from existing 3D city model

**GBP 150+**

**FREE OF CHARGE**

## Timing

(working days)

**Draft: 1-3**

**Final: 1-2**

*Price and timing can fluctuate depending on the complexity of the building and the level of detail required for the overall scope. Consult your Edgite representative for your project specifics.*

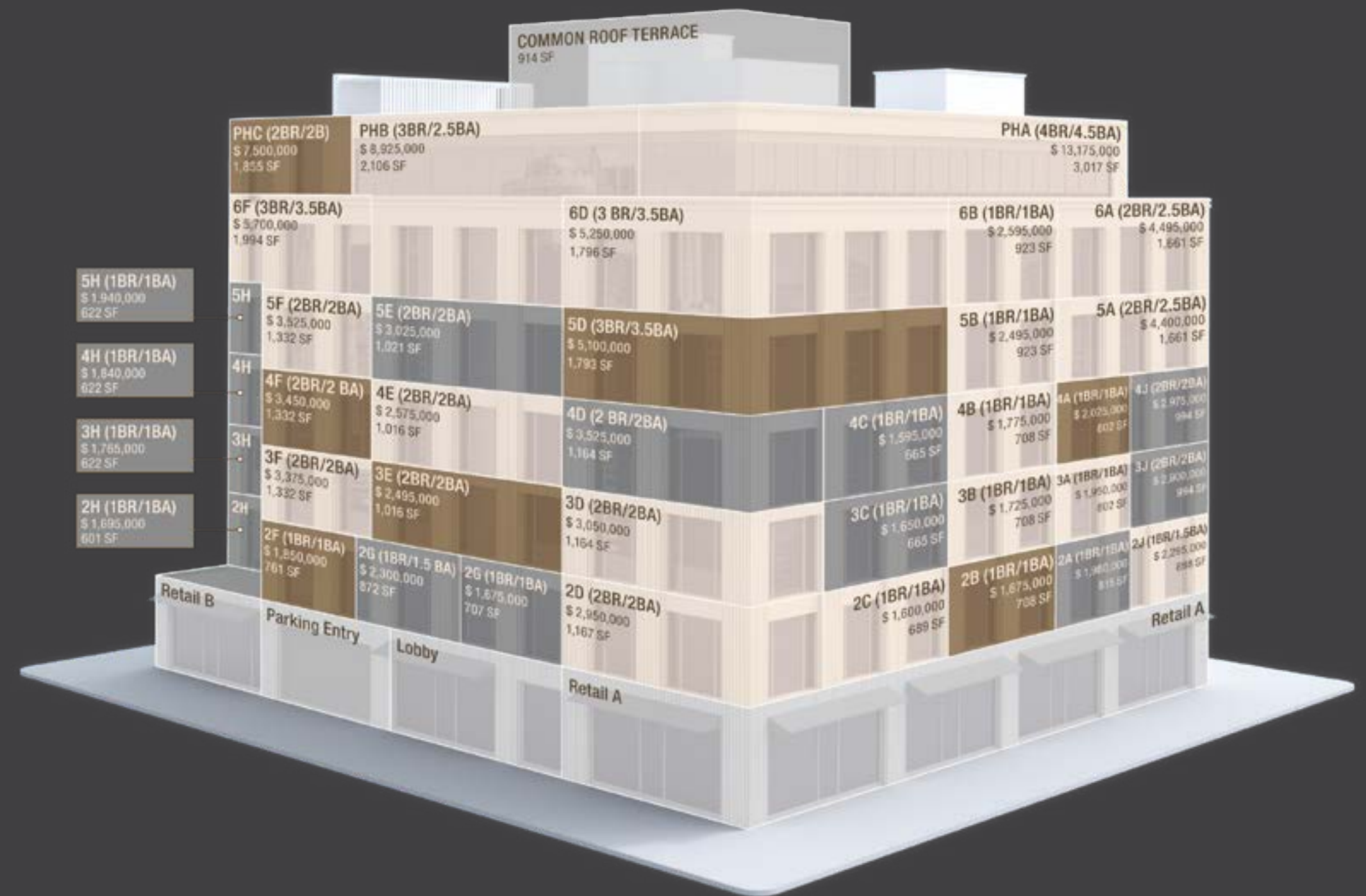
## What to include in the brief?

- Floor plans, façade plans, and other data to assist in the modelling process (ceiling heights, section plans, finishes, etc.) - any missing, incomplete or low-quality source files could increase the costs
- Confirmation of the viewing angle
- Any references or style example images



## Regent

- Simplified 3D model based on photo: GBP 450
- Additional Surroundings: GBP 150



## Kenmare - Vector Overlays

- Simplified 3D model based on 2D plans: : GBP 450
- Vector Overlays: GBP 150



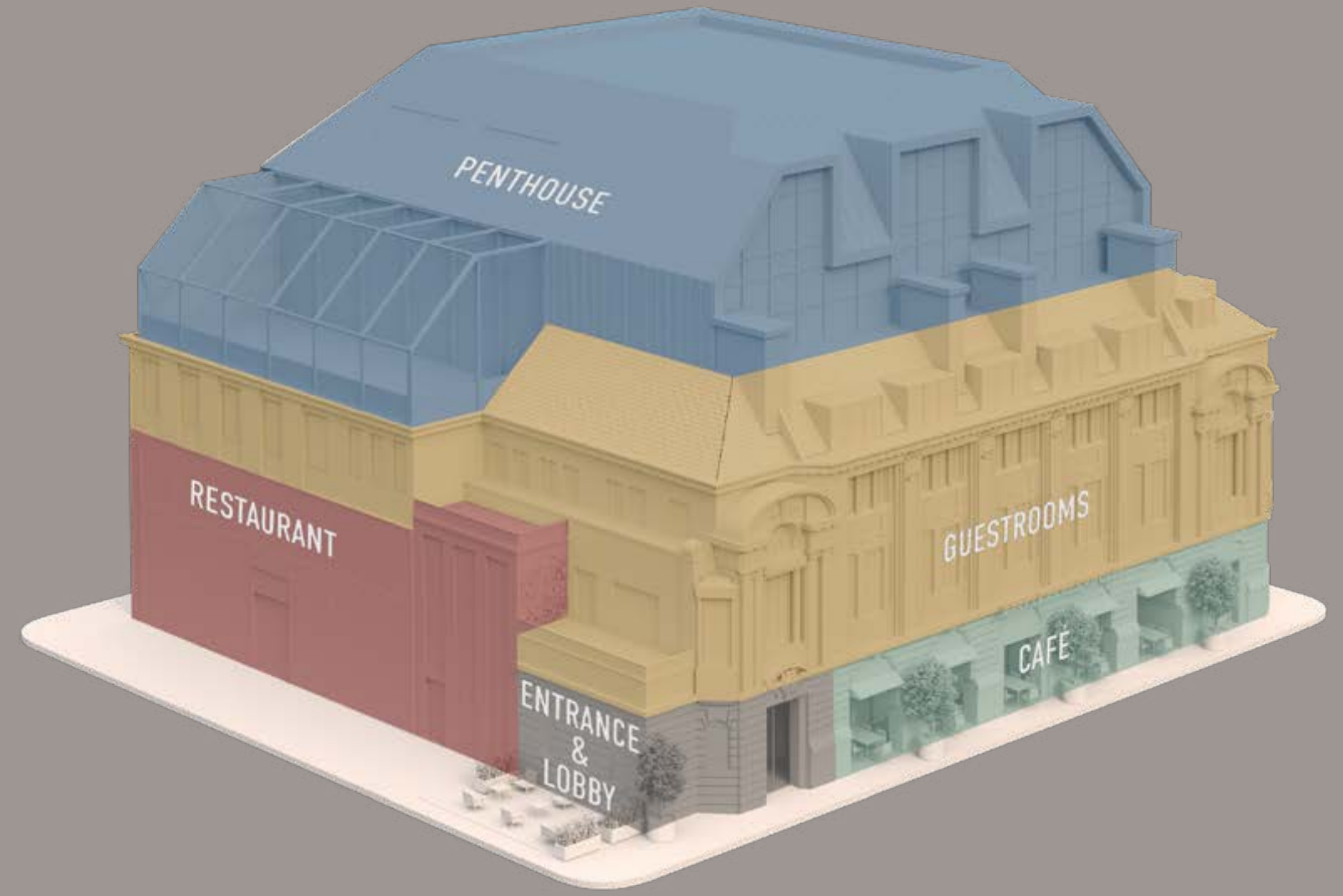
## Kingsway

- Detailed 3D stacking plan: **GBP 750**
- Additional Surroundings (from existing 3D City model): **FREE OF CHARGE**









## Norfolk - Vector Overlays

- Detailed 3D model based on 2D plans: : GBP 750
- Furnishing and vector overlays: GBP 400











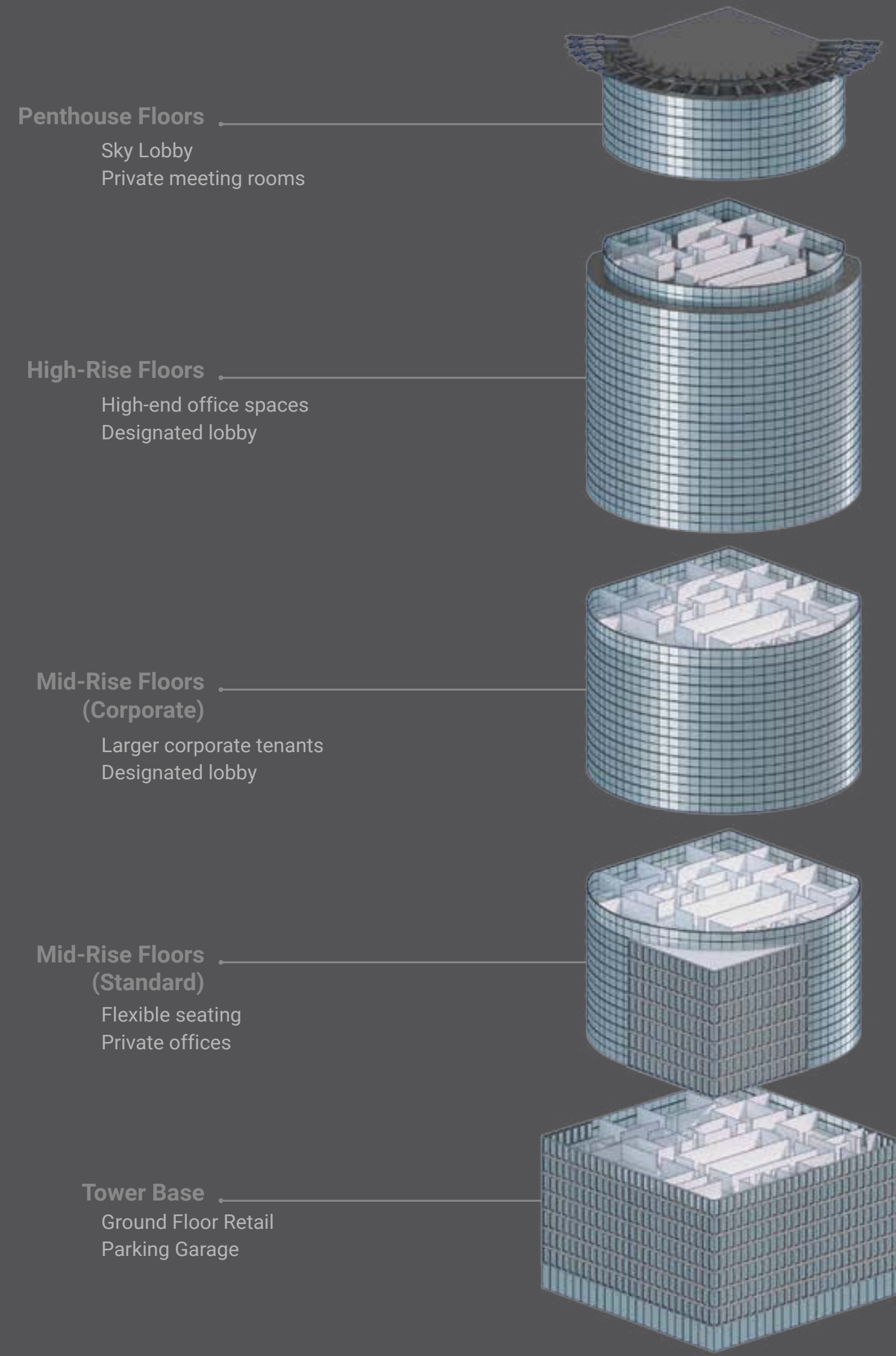
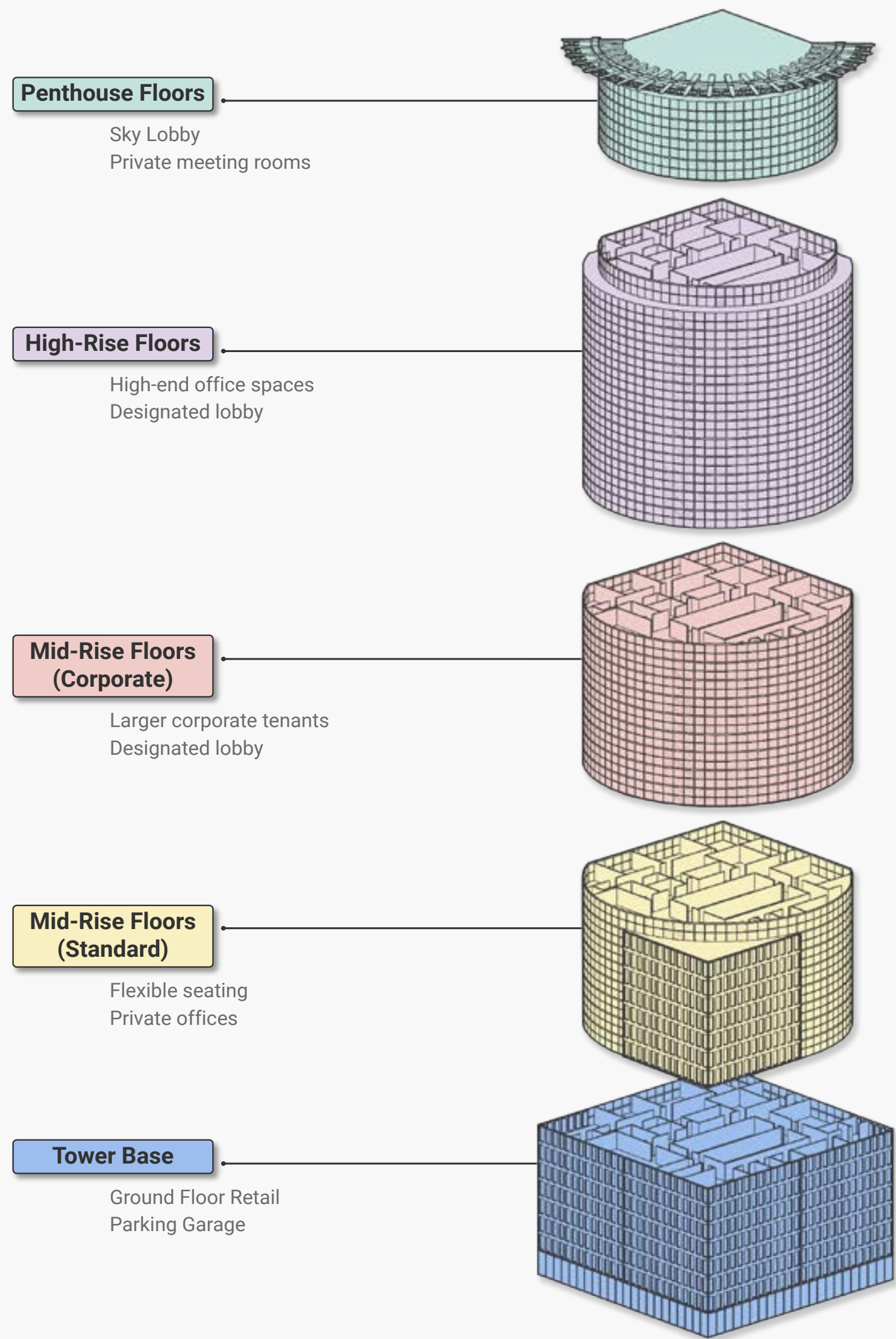


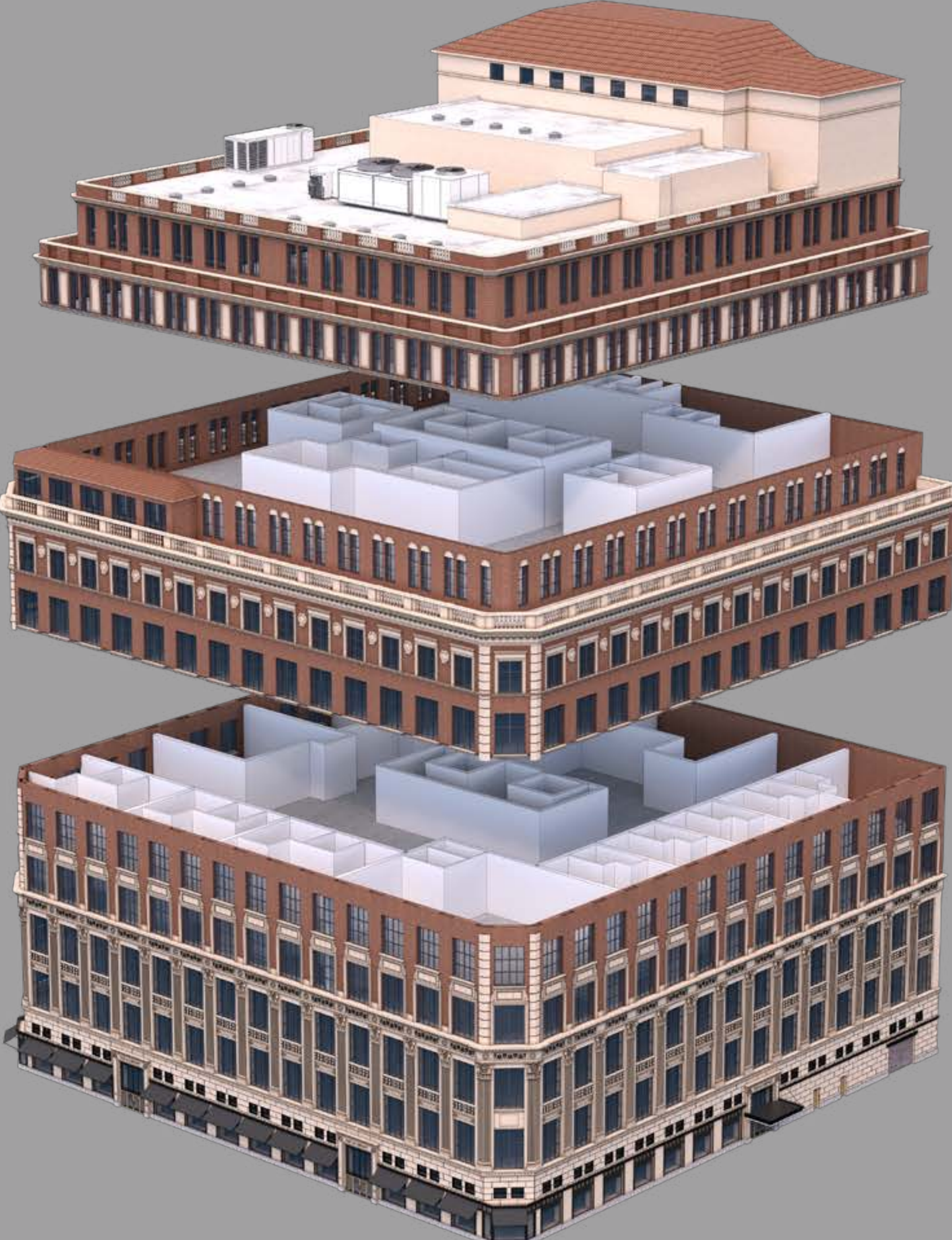
## Nexus - Dollhouse View

- Detailed 3D stacking plan: GBP 700
- Finishes and furnishing: GBP 1 200



# Exploded Views





## Riva

- Simplified 3D stacking plan: **GBP 450**
- Custom, Hand-drawn Surroundings: **REQUEST QUOTE**





# Animated Site/ Stacking Plans

---

Animated Stacking Plan with  
3D Modeled Surroundings

GBP 950+

---

Animated Stacking Plan  
tracked into Aerial Footage

GBP 700+

---

Timing  
(working days)

Draft: 2-3  
Final: 1-3

## Extras:

- Extended surroundings/details (combined with 3D maps)
- Interior details, labels, unique overlays

## What to include in the brief?

- Floor plans, façade plans, and other data to assist in the modelling process (ceiling heights, section plans, finishes, etc.) - any missing, incomplete or low-quality source files could increase the costs
- Confirmation of the viewing angle
- Any references or style example images

## 360° Viewer for a Single Building



## 360° Viewer for a Complex Site



# 360° Viewer

360° Viewer for a Single Building

GBP 800+

360° Viewer for a Complex Site

GBP 1 300+

### Timing

(working days)

Draft: 3-4

Final: 2-4

- Includes detailed 3D modelling of a building/site
- HTML5-based Interactive System with Standard UI
- Single height turnaround with 36+ rendered frames

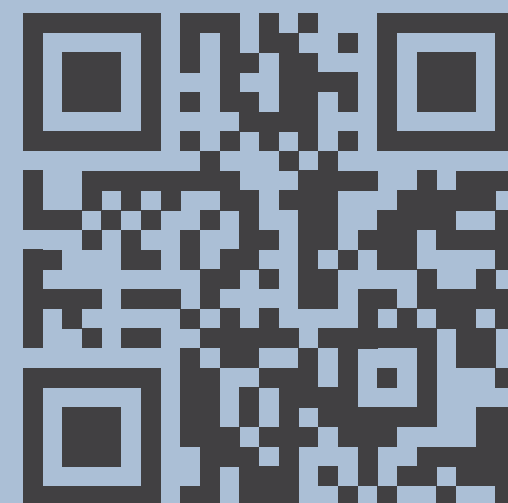
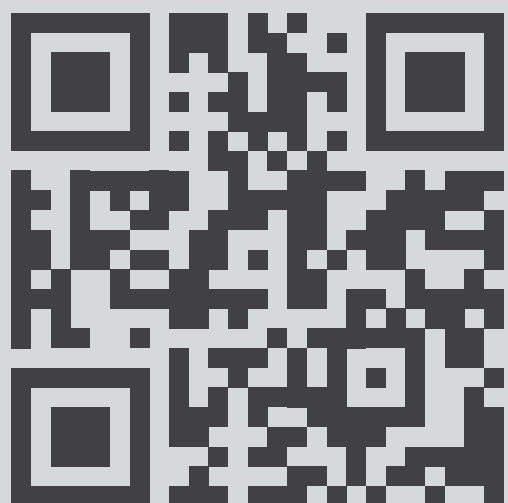
*As this product integrates multiple rendered views of a detailed building model, significant discounts are available when ordered with Rendered 3D Stacking Plans or Photorealistic Exteriors. Price and timing can fluctuate depending on the complexity of the building and the level of detail, labels, overlays, integration and viewing options. Consult your Edgite representative for your project specifics.*

### What to include in the brief?

- Site plans, floor plans, façade plans and other data to assist in the modelling process (ceiling heights, section plans, finishes)

### Recommended use:

- 360° detailed overview of a building/site
- To show future buildings (planned or under construction)
- To highlight amenities/tenants/access



# our services

## 3D Renderings

- Photorealistic Exteriors
- Photorealistic Interiors
- Repositioning Renderings



## Functional 3D Graphics

- 3D Stacking Plans
- 3D Floor and Site Plans
- 3D Maps



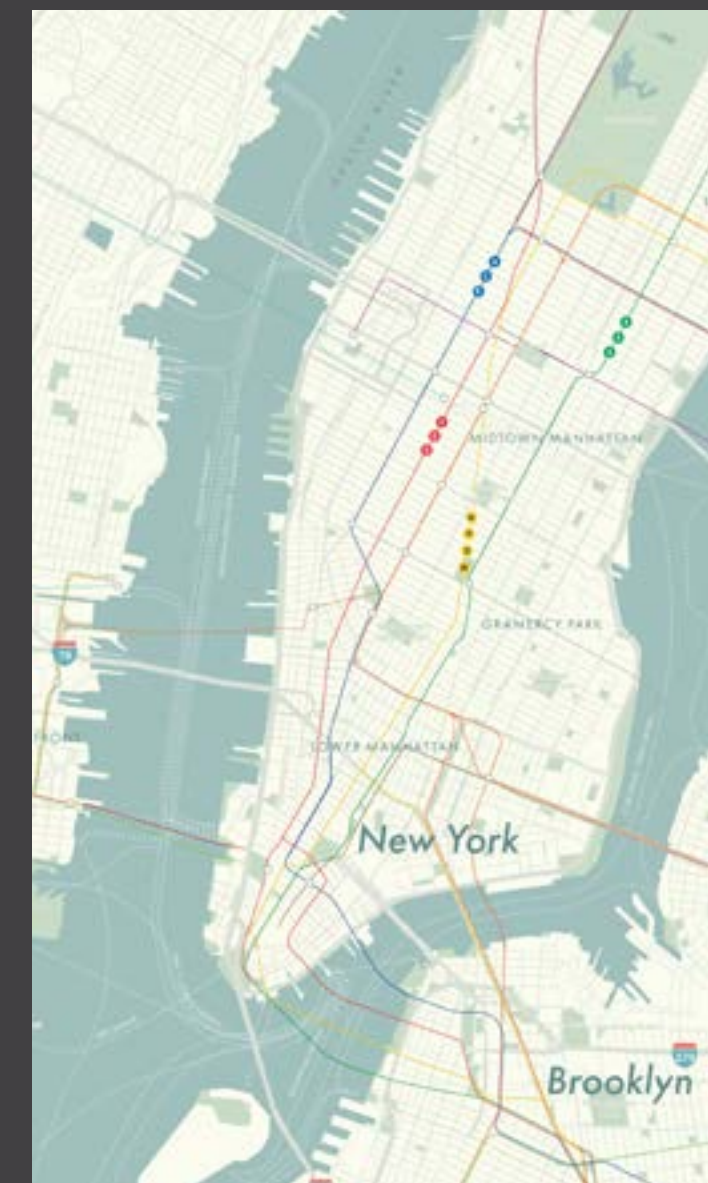
## Multimedia

- Virtual Tours
- Interactive Labelled Aerials
- Video Editing
- Animation



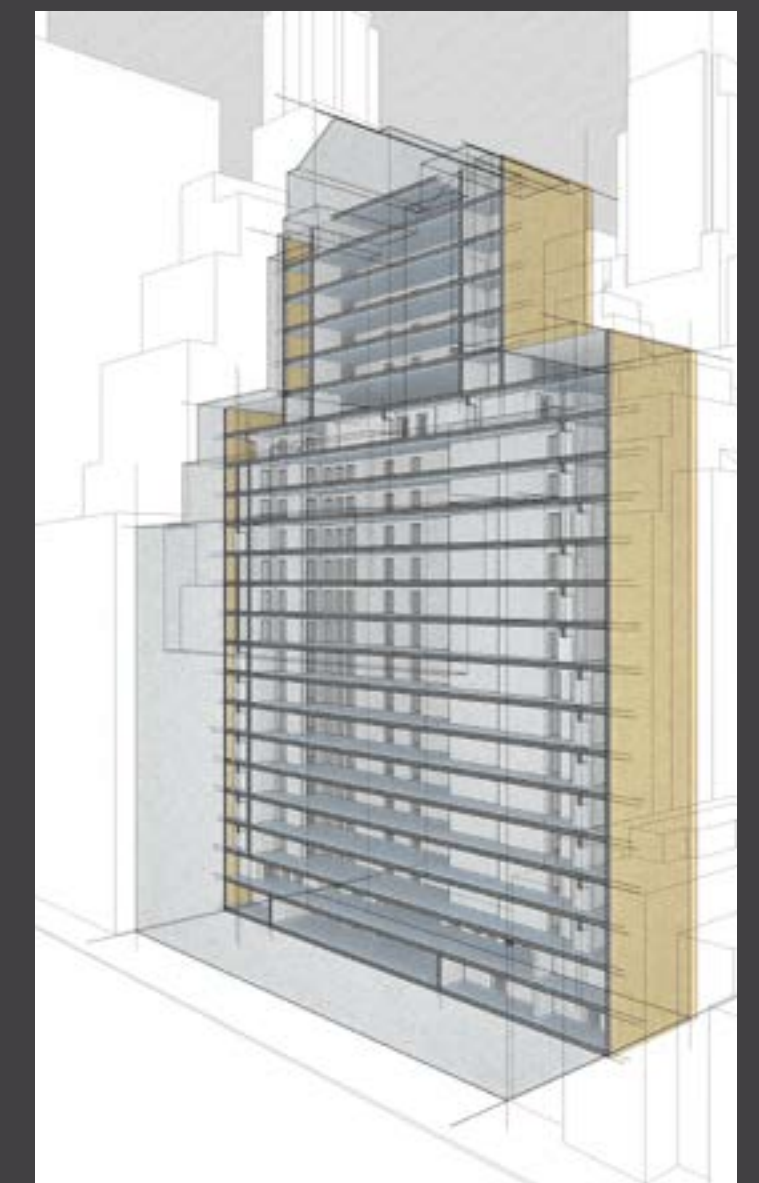
## Vector Graphics

- Vector Maps
- Amenity / Comp Maps
- Logo Maps
- 2D Floor and Site Plans



## Custom Graphics

- Infographics
- Booklet Design
- Line Drawings





**Please get in touch with us via**

**[hello@edgite.com](mailto:hello@edgite.com)**

**More references online:**

**[edgite.com](http://edgite.com)**

